

AHE
Wall-Mounted
Gas Boiler

RATINGS

DIMENSIONS



Water
2 Sizes:
33-44 Net MBH
for Apartments...
Condos... Room
Additions ...
Replacements

REPAIR PARTS

Product Features:

Energy Efficient: Average AFUE-85%

Direct Venting

No chimney required. Boiler vents directly out the back - or from either side - through an outside wall.

Wall Mounting

Designed for individual metering in apartments and condominiums, room additions to existing homes, replacement of inefficient boilers, and conversions from electric heat.

Compact Design

The AHE is only 32 1/2" high, 21" wide, 15" or 18" deep.

Cast Iron

For durability and long life. Can be connected to existing piping and radiation.

5-Year Homeowner Protection Plan:

Optional plan covers boiler parts, supplied by Weil-McLain, and labor for all eligible repairs. Available through participating installers.



As an ENERGY STAR Partner, Weil-McLain has determined that this product meets the ENERGY STAR guidelines for energy efficiency.

RATINGS

AHE Gas Boiler (SERIES 3)



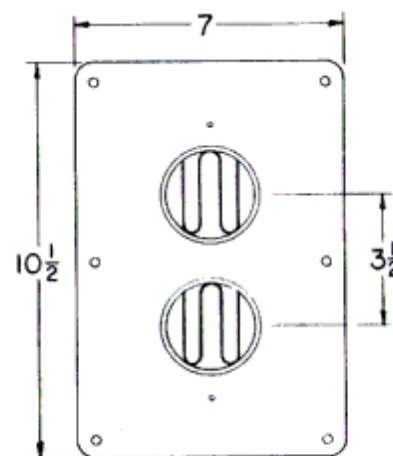
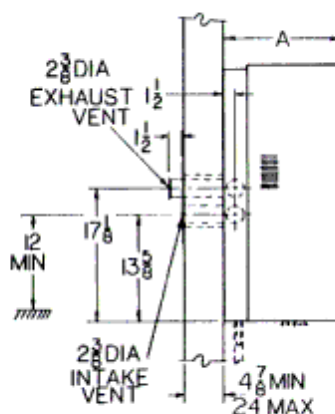
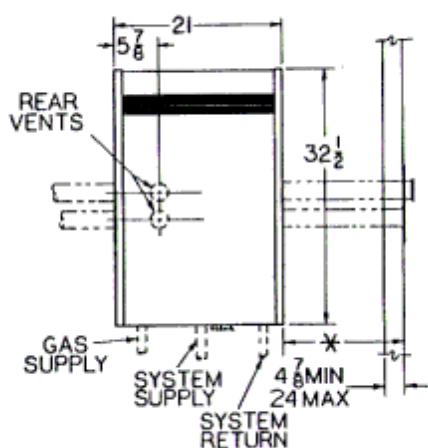
Water Boiler Number	A.G.A. Input BTU/Hr.	DOE Heating Capacity BTU/Hr. ¹	Net I-B-R Ratings - Water BTU/Hr. ²	DOE Seasonal Efficiency (AFUE)
AHE-45	45,000	38,000	33,000	85.3%
AHE-60	60,000	51,000	44,000	85.5%

1. Based on standard test procedures prescribed by the United States Department of Energy.
2. Net I-B-R ratings are based on net installed radiation of sufficient quantity for the requirements of the building and nothing need be added for normal piping and pickup. Ratings are based on a piping and pickup allowance of 1.15. An additional allowance should be made for unusual piping and pickup loads.

NOTES: AHE boiler not available for millivolt systems. Tested at 50 PSI working pressure. Available for natural and propane gas. AHE-45 boiler will heat most apartments with conventional wall construction and insulation. However, a heat loss calculation should *always* be made before selecting a boiler.

DIMENSIONS

AHE Gas Boiler (SERIES 3)



Water Boiler Number	Copper Supply	Copper Return	Boiler Depth A	Natural Gas Connection Size ¹	Approx. Wt. - Lbs.	
					Shipping	Lifting ²
AHE-45	3/4"	3/4"	14 7/8"	3/8"	145	132
AHE-60	3/4"	3/4"	17 7/8"	3/8"	177	166

1. Gas piping from meter to boiler to be sized according to local utility requirements.
2. Boiler assembly *without* back panel, cabinet and crate. Boiler crate dimensions: 19 1/2" W, 36" D, 24 1/2" H.

In the interest of continual improvement in products and performance, Weil-McLain reserves the right to change specifications without notice.