



# spirax/sarco®

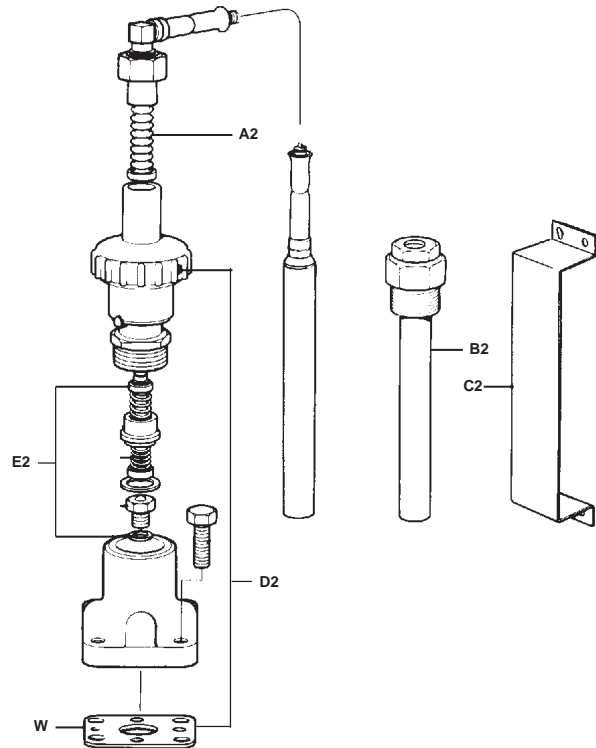
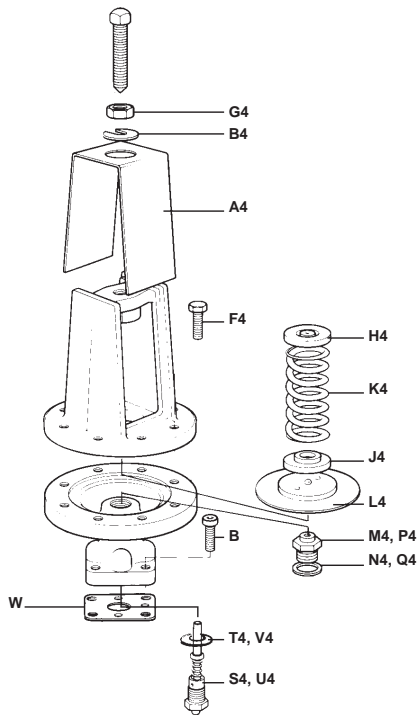
## Spare Parts Guide 1/2" to 6" 25P, 25PE, 25PT, 25PTE, 25PA, 25BP, Pilots

### SPARE PARTS – PRESSURE PILOT, P & BP

Cover Plate w/ Retaining Ring	A4, B4
Pilot Screws w/ Gasket	B, F4
Adjustment Screw w/ Nut, and Upper and Lower Spring Support Discs	G4, H4 J4
Adjustment Spring	K4
Specify controlled pressure and spring color	
Yellow	3 to 30 psi
Blue	20 to 100 psi
Red	80 to 250 psi
Diaphragm Assembly	L4
Stem Guide w/ Gasket (25P, 25PA)	M4, N4
Stem Guide and Seal Gasket (25BP)	P4, Q4, R4
Head & Seat Assembly w/ Gasket (25P, 25PA)	S4, T4
Head & Seat Assembly (25BP)	U4, V4
Square Gasket for all Pilots	W

### SPARE PARTS – TEMPERATURE PILOT SEE TIS 1.1123

Thermal System (T1, T2, T3, T10, T11, T12)	A2
State bulb style, capillary tube length & temperature range	
Well (T5, T6, T7, T8, T11)	B2
State bulb style	
Wall Mounting Bracket (T9)	
State bulb style	C2
Complete Pilot Body Assembly	D2, W
Head & Seat Assembly	E2, W
Specify 15 psig or below Assembly or Standard	



Local regulation may restrict the use of this product below the conditions quoted. Limiting conditions refer to standard connections only.  
In the interests of development and improvement of the product, we reserve the right to change the specification.

TIS 3.0271 US 04.95

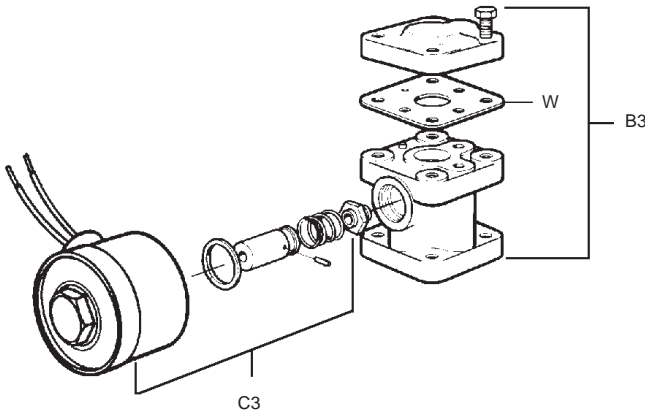


# Spare Parts Guide 1/2" to 6" 25P, 25PE, 25PT, 25PTE, 25PA, 25BP, Pilots

Catalogs

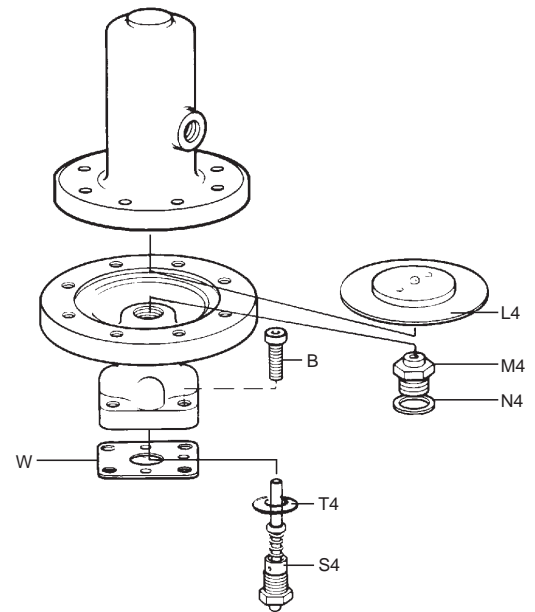
## SPARE PARTS – ELECTRIC PILOT

NEMA 4 & 7 Solenoid specify voltage and steam pressure	C3
Complete "E" Pilot Body Assembly	B3, W

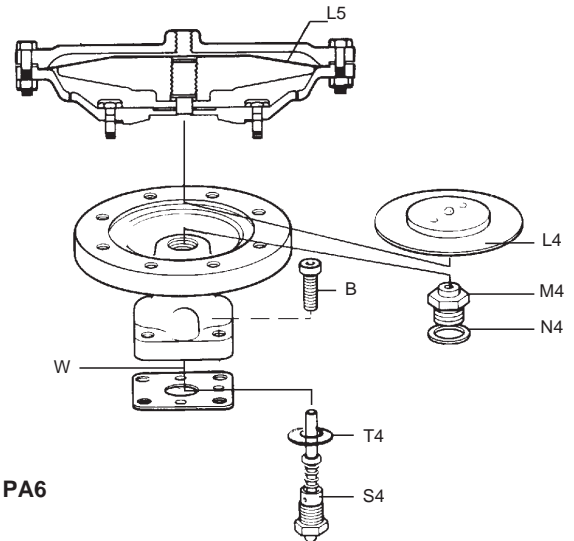


## SPARE PARTS – PA (AIR LOADED) PILOT

Pilot Mounting Screws	B
Lower Diaphragm Assembly	L4
Upper Diaphragm for PA4	L5
Upper Diaphragm for PA6	L5
Stem Guide w/ Gasket	M4, N4
Head & Seat Assembly w/ Gasket	S4, T4
Square Gasket for all Pilots	W



PA



PA4, PA6

## HOW TO ORDER

Always order spares by using the description given in the first column under Spare Parts, stating the valve size and material. When ordering temperature pilots, specify the bulb style, capillary length and temperature range. When ordering electric pilots, specify electrical characteristics, pressures and size of main valve.

Example: 1 – Thermal System style T1 for 2" Spirax Sarco 25PT Pressure Temperature control with 8-ft capillary tubing and temperature range 120°F to 180°F.

1 – NEMA 4 Solenoid for 1-1/2" Spirax SARco 25PE Reducing Valve with 115 volt, 60 Hz AC coil steam pressure 200 psi.

## MAINTENANCE

See installation and maintenance instructions supplied with each valve, copies are available on request.

TIS 3.0271 US 04.95