



5-year warranty


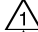




## Technical data

|                        |                                    |                                                                                           |
|------------------------|------------------------------------|-------------------------------------------------------------------------------------------|
| <b>Electrical data</b> | Nominal voltage                    | AC 100...240 V                                                                            |
|                        | Nominal voltage frequency          | 50/60 Hz                                                                                  |
|                        | Power consumption in operation     | 2 W                                                                                       |
|                        | Power consumption in rest position | 0.5 W                                                                                     |
|                        | Transformer sizing                 | 4 VA (class 2 power source)                                                               |
|                        | Electrical Connection              | 18 GA appliance cable, 3 ft [1 m], with 1/2" conduit connector                            |
|                        | Overload Protection                | electronic throughout 0...95° rotation                                                    |
| <b>Functional data</b> | Input Impedance                    | 600 Ω                                                                                     |
|                        | Direction of motion motor          | selectable with switch 0/1                                                                |
|                        | Manual override                    | external push button                                                                      |
|                        | Angle of rotation                  | 90°                                                                                       |
|                        | Angle of rotation note             | adjustable with mechanical stop                                                           |
|                        | Running Time (Motor)               | 90 s                                                                                      |
|                        | Noise level, motor                 | 35 dB(A)                                                                                  |
| <b>Safety data</b>     | Position indication                | Mechanically, pluggable                                                                   |
|                        | Degree of protection IEC/EN        | IP54                                                                                      |
|                        | Degree of protection NEMA/UL       | NEMA 2                                                                                    |
|                        | Enclosure                          | UL Enclosure Type 2                                                                       |
|                        | Agency Listing                     | cULus acc. to UL60730-1A/-2-14, CAN/CSA E60730-1:02, CE acc. to 2014/30/EU and 2014/35/EU |
|                        | Quality Standard                   | ISO 9001                                                                                  |
|                        | Ambient temperature                | -22...122°F [-30...50°C]                                                                  |
|                        | Storage temperature                | -40...176°F [-40...80°C]                                                                  |
|                        | Ambient humidity                   | max. 95% r.H., non-condensing                                                             |
|                        | Servicing                          | maintenance-free                                                                          |
| <b>Weight</b>          | Weight                             | 1.1 lb [0.50 kg]                                                                          |

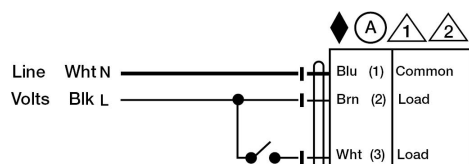
## Electrical installation

### INSTALLATION NOTES

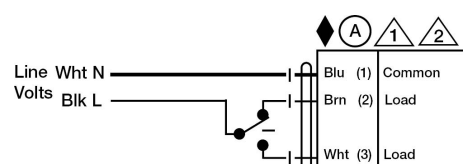
-  Actuators with appliance cables are numbered.
-  Provide overload protection and disconnect as required.
-  Actuators may be connected in parallel. Power consumption and input impedance must be observed.
-  Meets cULus requirements without the need of an electrical ground connection.

### **Warning! Live Electrical Components!**

During installation, testing, servicing and troubleshooting of this product, it may be necessary to work with live electrical components. Have a qualified licensed electrician or other individual who has been properly trained in handling live electrical components perform these tasks. Failure to follow all electrical safety precautions when exposed to live electrical components could result in death or serious injury.



On/Off AC 100...240 V



Floating Point AC 100...240 V