

PRODUCT INFORMATION PACKET

FASCO®

Model No: D488

Catalog No: D488

1/20 HP Condenser Fan Motor, 1550 RPM, 115/208-230 Volts, 42 Frame, Semi Enclosed
Condenser Fans Motors



Regal and Fasco are trademarks of Regal Beloit Corporation or one of its affiliated companies.
©2019 Regal Beloit Corporation, All Rights Reserved. MC017097E

REGAL



Nameplate Specifications

Output HP	1/20 Hp	Output KW	0.04 kW
Frequency	60 Hz	Voltage	115/208-230 V
Current	1.2/0.6 A	Speed	1550 rpm
Service Factor	1	Phase	1
Duty	Continuous	Insulation Class	B
Frame	42	Enclosure	Open Air Over
Thermal Protection	Automatic	Ambient Temperature	40 °C
UL	Recognized	CSA	Y
CE	N		

Technical Specifications

Electrical Type	Permanent Split Capacitor	Starting Method	Across The Line
Poles	4	Rotation	Reversible
Mounting	Resilient Rings	Drive End Bearing	Sleeve
Opp Drive End Bearing	Sleeve	Frame Material	Rolled Steel
Shaft Type	Flat	Overall Length	8.37 in
Frame Length	4.13 in	Shaft Diameter	0.375 in
Shaft Extension	3.25 in		

This is an uncontrolled document once printed or downloaded and is subject to change without notice. Date Created:29/10/2019

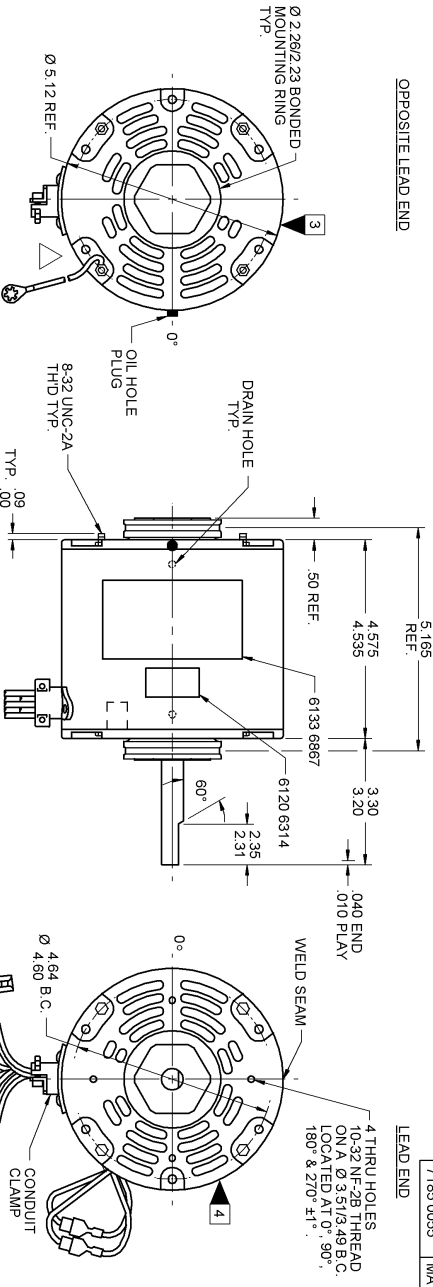
- NOTES
1. STATOR LOCATION DIMENSION IS FROM SLEEVE EDGE (OPPOSITE LEAD END) TO STATOR STEEL 1.281/26.
 2. STATOR STACK .314"
 3. THRU AIR SPACING BETWEEN WIRE AND METAL .94 MIN.
 4. THE BOLT TORQUE TOLERANCE 13 - 17 IN. LBS.
 5. FOR WASHER SET-UP, SEE CHART C800 02/9, DETAIL A
 6. LEAD DANGER LABEL, 6120 6314, ADJUSTED TO AND ABOVE NAMEPLATE WITHIN .25" TO LEAD RIGHT FROM OFF. LEAD END OF MOTOR.
 7. TONGUE THE TWO YELLOW REV LEADS TOGETHER AND THE TWO PURPLE REV LEADS TOGETHER. THE TWO YELLOW REV LEADS TOGETHER AND THE TWO PURPLE REV LEADS TOGETHER. THE TWO YELLOW REV LEADS TOGETHER AND THE TWO PURPLE REV LEADS TOGETHER.
 8. SALES TO SPECIFY ON P.O. WHICH PACK TO USE.

ECO	REV.	DATE	SPEC/CHECK
639394	8	4-6-09	MKR/MKR
641081	9	02-19-10	GAE/GAE
637256	6	5-14-07	MKR/MKR
639867	7	11-24-08	GAE/GAE

71xx xxxx,Z	71xx xxxx,C	71xx xxxx,R
		<p>A. SEE PACKAGING MANUAL PAGE 3 FOR PACKAGING PROCEDURES.</p> <p>1 MOTOR/CARTON: 18 MOTORS/LAYER: 6 LAYERS/PALLET: 108 MOTORS/PALLET.</p> <p>B. SEE DRAWING 8786 6079 SH. 3 FOR PALLET LAYOUT.</p> <p>C. CENTER LABEL, 6120 6315, ON END OF CARTON.</p> <p>D. PLACE CAPACITOR, 6100 9020, RUBBER BOOT 0012 0079, AND SHAFT BUSHING, 0006 3274, IN CARTON WITH MOTOR.</p> <p>E. PLACE PAMPHLET, 6122 4579, IN CARTON WITH MOTOR.</p>

PRODUCTION TEST AT IDLE		PERFORMANCE TEST			LOADED			LOCKED		BREAK					
115 VOLTS 60 HZ		115 VOLTS 60 HZ			1 PH 1/20 HP			CAP. 3 MFD 320 VAC		CAP. 3 MFD 320 VAC					
AMP	WATT	AMP	WATT	AMP	WATT	AMP	WATT	AMP	WATT	AMP	WATT				
.64	— .52	45.1	— 36.9	HIGH	1765	.58	41	49.0	1550	1.09	111	24.0	2.06	212	63.0

HI-POT TEST 2000 VOLTS		TYPICAL PERFORMANCE SHOWN FOR CWLVE ROTATION	
MAX LEAKAGE CURRENT 5 MA			



7185 0055 = MADE IN U.S.A.
 7185 0055R = ASSEMBLED IN MEXICO

DANGER
 TO AVOID ELECTRICAL SHOCK/
 MOTOR DAMAGE, ONLY USE
 MOTOR SCHEMATIC TYP. TELL
 THE MOTOR MANUFACTURER
 FROM MOTOR FACE.

6120 6314

FASCO MOTOR DIVISION
 FASCO INDUSTRIES, INC.
 PH 1 ROT
 INS CL B
 CAP 3 HFD 370 VAC
 NO. 7185-0055
 RPM 1550
 AO TYPE U18891

MODEL D488

ROTATION INSTRUCTIONS

SHAFT END, SHAFT END
 PURPLE — PURPLE
 YELLOW — YELLOW
 YELLOW — PURPLE

CONNECTION DIAGRAM

BRN 115 V
 BRN/WHT 3 CAP BRN 138 230 V
 WHT LINE WHT 3 CAP
 WHT LINE WHT INSULANT
 BLUE LINE BLUE 3 CAP
 RED LINE RED 3 CAP
 BLK LINE BLK 3 CAP

SAFETY WARNING

THIS MOTOR MUST BE REWOUND IN ACCORDANCE WITH THE REWINDING INSTRUCTIONS PROVIDED. REWINDING MUST BE DONE BY A QUALIFIED REWINDER. REWINDING MUST BE DONE IN ACCORDANCE WITH THE REWINDING INSTRUCTIONS PROVIDED. REWINDING MUST BE DONE BY A QUALIFIED REWINDER. REWINDING MUST BE DONE IN ACCORDANCE WITH THE REWINDING INSTRUCTIONS PROVIDED.

DATE BAR CODE AREA PER 8882 6003

LOCATE C OF NAMEPLATE ON C OF SLEEVE TO READ RIGHT FROM OPP. LEAD END OF MOTOR CENTER AT 0°.

SIZE 3.50 X 2.00

LEAD DATA: 18 GA. 2/64" INS. 125° C EPDM, WHITE PURPLE, RED, BLUE & BLACK LINE LEADS 32.00"/50.00" LONG WITH .567/44" STRIPS, BROWN & BRN/WHT CAP LEADS 32.00/30.00" LONG WITH 1/4" FLAG TERMINALS.

REV. LEAD DATA: 18 GA. 2/64" INS. 125° C EPDM, 2-PURPLE & 2-PURPLE 5.00/76.00" LONG WITH 1/4" PRE-INSULATED Q.C. TERMINALS.

GROUND DATA: 18 GA. 2/64" INS. 105° C THERMO GREEN 13.50/12.50" LONG WITH A #10 SERRATED RING TERMINAL.

SPECIAL INSTRUCTIONS: SHAFT IS BONDZERIZED. ROTOR IS RUSTPROOFED. GROUND STRAP TERMINAL IS NOT TO EXTEND BEYOND PERIPHERY OF MOTOR. ROTATE WELD SEAM 90° CWLVE, AS SHOWN. 3/8" TO 1/2" SHAFT BUSHING, CAPACITOR AND RUBBER BOOT PACKED WITH MOTOR. PAMPHLET PACKED WITH MOTOR.

MOTORS PACKED MAX. PER SKID: PALLET PACK, 108 CARTON PACK, TRAY PACK

CUSTOMER: FASCO DISTRIBUTING CO.

PROHIBITARY: DO NOT DUPLICATE OR DISPOSE TO THIRD PARTIES WITHOUT WRITTEN PERMISSION OF FASCO IND. INC., ELDON MO.

FASCO INDUSTRIES, INC.
 MOTOR DIVISION
 ELDON PLANT

PART NUMBER: D488

APPLICATION: DIST. SALES

FINISH COLOR: GRAY

MOTOR WEIGHT: 7.40 LBS.

ENVIRONMENT: WET

INSULATION CLASS: B

LA	FR	A	S	C	E	B	A	MOTOR NUMBER	REV.
B	LA	FR	A	S	C	E	B	A	9
00	95	31	V	12	AE	5	8	0	