

# PRODUCT INFORMATION PACKET

**FASCO**<sup>®</sup>

Model No: D291

Catalog No: D291

1/10-1/15-1/25-1/40 HP Fan Coil / Room Air Conditioner Motor, 1050 RPM, 4 Speed, 115 Volts, 42 Frame, OAO  
Fan Coil / Room Air Conditioner Motors



Regal and Fasco are trademarks of Regal Beloit Corporation or one of its affiliated companies.  
©2019 Regal Beloit Corporation, All Rights Reserved. MC017097E

**REGAL**



### Nameplate Specifications

Output HP	1/10-1/15-1/25-1/40 Hp	Output KW	0.07 kW
Frequency	60 Hz	Voltage	115 V
Current	2.2/1.4/1.0/0.7 A	Speed	1050 rpm
Service Factor	1	Phase	1
Duty	Continuous	Insulation Class	B
Frame	42	Enclosure	Open Air Over
Thermal Protection	Automatic	Ambient Temperature	40 °C
UL	Recognized	CSA	Y
CE	N		

### Technical Specifications

Electrical Type	Permanent Split Capacitor	Starting Method	Across The Line
Poles	6	Rotation	Clockwise Lead End
Mounting	Resilient Base	Drive End Bearing	Sleeve
Opp Drive End Bearing	Sleeve	Frame Material	Na
Shaft Type	Flat	Overall Length	24.68 in
Shaft Diameter	0.500 in	Shaft Extension	10.75 in

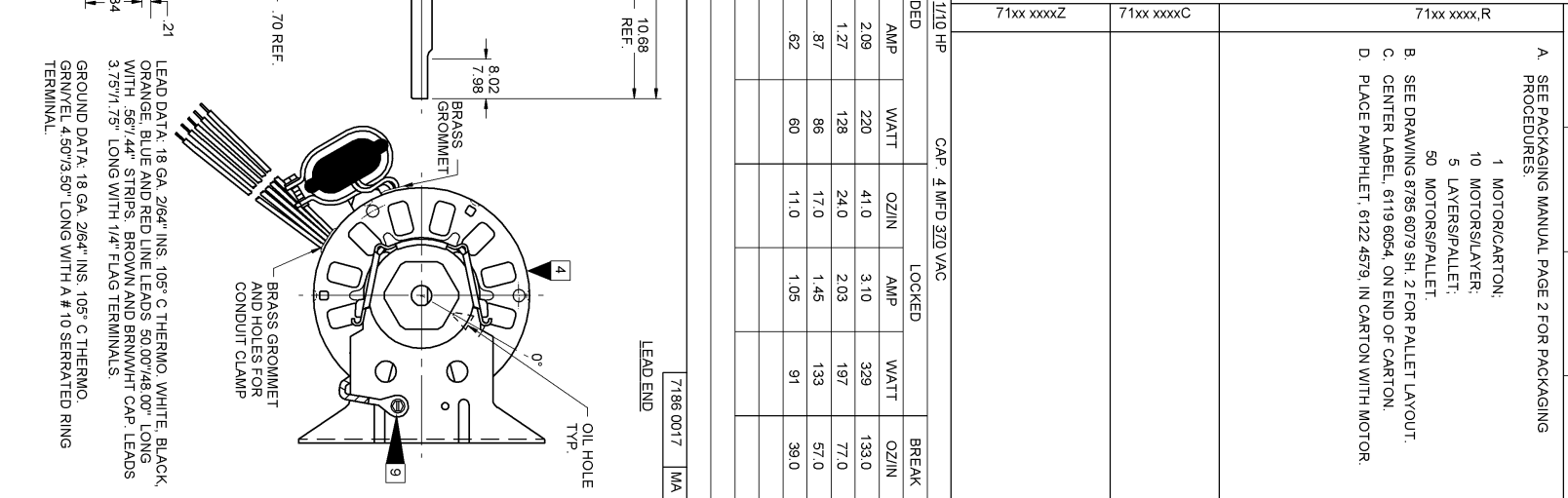
This is an uncontrolled document once printed or downloaded and is subject to change without notice. Date Created:29/10/2019

## EC

- | ECO    | REV. | DATE     | SPEC/CHECK |
|--------|------|----------|------------|
| 641584 | 16   | 9-20-10  | MKR/MKR    |
| 631602 | 13   | 8-15-03  | JAV/RWS    |
| 638799 | 14   | 11-11-08 | GAE/GAE    |
| 639182 | 15   | 03-10-09 | GAE/GAE    |

71xx xxxxZ	71xx xxxxC	<p>A. SEE PACKAGING MANUAL PAGE 2 FOR PACKAGING PROCEDURES.</p> <p>1 MOTOR/CARTON;  10 MOTORS/LAYER;  5 LAYERS/PALLET;  50 MOTORS/PALLET.</p> <p>B. SEE DRAWING 8785 8079 SH. 2 FOR PALLET LAYOUT.</p> <p>C. CENTER LABEL, 6719 6054, ON END OF CARTON.</p> <p>D. PLACE PAMPHLET, 6122 4579, IN CARTON WITH MOTOR.</p>
------------	------------	--

**3 of 3**



71xx xxxxZ

71xx xxxxC

71xx xxxx,R

A. SEE PACKAGING MANUAL PAGE 2 FOR PACKAGING PROCEDURES.

1 MOTOR/CARTON;  
10 MOTOR/LAYER;  
5 LAYERS/PALLET;  
50 MOTORSPALLET.

B. SEE DRAWING 8785 8079 SH. 2 FOR PALLET LAYOUT.

C. CENTER LABEL, 6119 6054, ON END OF CARTON.

D. PLACE PAMPHLET, 6122 4579, IN CARTON WITH MOTOR.

1/10 HP

CAP. 4 MFD 370 VAC

DEED		LOCKED		BREAK	
AMP	WATT	OZ/IN	AMP	WATT	OZ/IN
2.09	220	41.0	3.10	329	133.0
1.27	128	24.0	2.03	197	77.0
.87	86	17.0	1.45	133	57.0
.62	60	11.0	1.05	91	39.0

7186 0017

MA

LEAD END

10.68 REF.

8.02

7.98

BRASS GROMMET

1.70 REF.

0.0

4

9

OIL HOLE TYP.

BRASS GROMMET AND HOLES FOR CONDUIT CLAMP

LEAD DATA: 18 GA. 2164" INS. 105° C THERMO. WHITE, BLACK, ORANGE, BLUE AND RED LINE LEADS 50.00" 748.00" LONG WITH .561" 44" STRIPS. BROWN AND BRN/WHY CAP. LEADS 3.75" 1.75" LONG WITH 1/4" FLAG TERMINALS.

GROUND DATA: 18 GA. 2164" INS. 105° C THERMO. GRN/YEL 4.50" 3.50" LONG WITH A # 10 SERRATED RING TERMINAL.

7186 0017

MA

10.68  
REF.

8.02  
7.98

BRASS GROMMET

BRASS GROMMET AND HOLES FOR CONDUIT CLAMP

0°

OIL HOLE TYP.

LEAD END

7186 0017 MA

71xx xxxxZ				71xx xxxxC				71xx xxxx,R			
110 HP				CAP. 4 MFD 320 VAC							
AMP	WATT	OZ/IN	LOCKED	AMP	WATT	OZ/IN	BREAK				
2.09	220	41.0	3.10	329	133.0						
1.27	128	24.0	2.03	197	77.0						
.87	86	17.0	1.45	133	57.0						
.62	60	11.0	1.05	91	39.0						

A. SEE PACKAGING MANUAL PAGE 2 FOR PACKAGING PROCEDURES.

1 MOTOR/CARTON;

10 MOTOR/LAYER;

5 LAYERS/PALLET;

50 MOTORS/PALLET.

B. SEE DRAWING 8785 6079 SH. 2 FOR PALLET LAYOUT.

C. CENTER LABEL, 6119 6054, ON END OF CARTON.

D. PLACE PAMPHLET, 6122 4579, IN CARTON WITH MOTOR.

PER SKID. PALLET PACK, 50 CARTON PACK, TRAY PACK

PROPERTY. DO NOT DUPLICATE OR DISCLOSE TO THIRD PARTIES WITHOUT WRITTEN PERMISSION OF FASCO IND. INC., ELDON MO.

FASCO INDUSTRIES, INC.

MOTOR DIVISION

ELDON PLANT

MOTOR TYPE P.S.C.

MOTOR NUMBER REV. 71860017 16

1. LEAD DATA: 18 GA. 2/64" INS. 105° C THERMO. WHITE, BLACK, ORANGE, BLUE AND RED LINE LEADS 50.00"±.48 00" LONG WITH .567"±.44" STRIPS. BROWN AND BRN/WH. CAP. LEADS 3.75"±.75" LONG WITH 1/4" FLAG TERMINALS.

2. GROUND DATA: 18 GA. 2/64" INS. 105° C THERMO. GRN/YEL. 4.50"±.50" LONG WITH A #10 SERRATED RING TERMINAL.

3. SHAFT IS BONDERIZED. FLATS TO BE PARALLEL WITHIN ± 20°.

4. WIRE IN BASE, AS SHOWN. LANCE MUST BE COMPLETELY COVERED. PILET PACKED WITH MOTOR.