

PRODUCT INFORMATION PACKET

FASCO®

Model No: D261
Catalog No: D261
1/8-1/15 HP Unit Heater Motor, 1075 RPM, 2 Speed, 115 Volts, 42 Frame, TEAO
Unit Heater Motors



Regal and Fasco are trademarks of Regal Beloit Corporation or one of its affiliated companies.
©2019 Regal Beloit Corporation, All Rights Reserved. MC017097E

REGAL



Nameplate Specifications

Output HP	1/8-1/5 Hp	Output KW	0.10 kW
Frequency	60 Hz	Voltage	115 V
Current	2.3/1.1 A	Speed	1075 rpm
Service Factor	1	Phase	1
Duty	Continuous	Insulation Class	B
Frame	42	Enclosure	Open Air Over
Thermal Protection	Automatic	Ambient Temperature	40 °C
UL	Recognized	CSA	Y
CE	N		

Technical Specifications

Electrical Type	Permanent Split Capacitor	Starting Method	Across The Line
Poles	6	Rotation	Reversible
Mounting	Extended Studs	Drive End Bearing	Sleeve
Opp Drive End Bearing	Sleeve	Frame Material	Na
Shaft Type	Flat	Overall Length	7.34 in
Shaft Diameter	0.500 in	Shaft Extension	3 in

This is an uncontrolled document once printed or downloaded and is subject to change without notice. Date Created:29/10/2019

NOTES:

1. THRU AIR SPACING BETWEEN WIRE AND METAL .094 MIN.
2. THE BOLT TORQUE TOLERANCE 7 - 12 IN. LBS.
3. FOR WASHER SET-UP, SEE CHART 0800 0279, DETAIL "H".
4. LOCATE CONNECTION DIAGRAM 6130 6312 ADJACENT TO AND RIGHT OF NAMEPLATE WITHIN .25" TO READ RIGHT FROM LEAD END OF MOTOR.
5. CONNECT THE TWO YELLOW REV. LEADS TOGETHER AND THE TWO PURPLE REV. LEADS TOGETHER. THIS WILL GIVE COWLE ROTATION.
6. ASSEMBLE NYLON GROMMET, 0061 3346, IN LEAD EXIT OF COVER, 8464 0491.
7. SALES TO SPECIFY ON P.O. WHICH PACK TO USE.

ECO	REV.	DATE	SPEC/CHECK
634153	6	01-17-05	GAE/XXX
638231	7	6-4-08	MKR/MKR
639206	8	3-13-09	MKR/MKR
641691	9	10-21-10	GAE/GAE

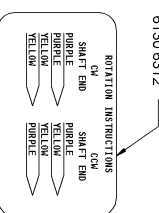
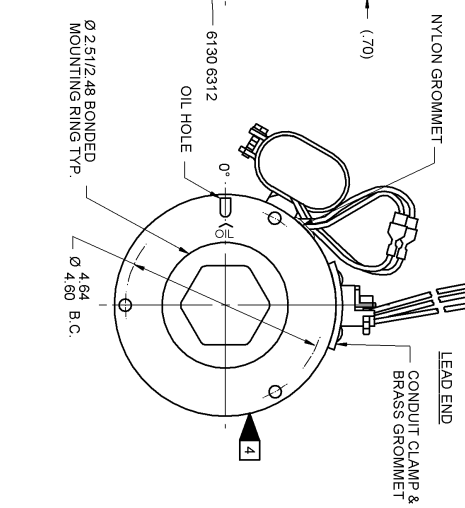
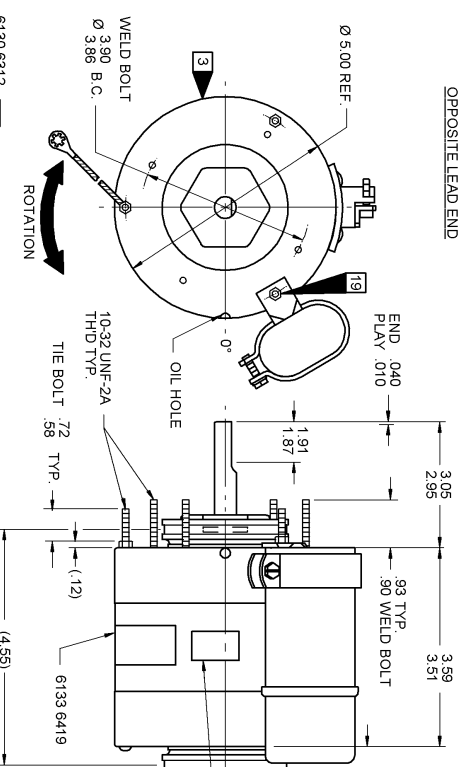
ECO	REV.	DATE	SPEC/CHECK
634153	6	01-17-05	GAE/XXX
638231	7	6-4-08	MKR/MKR
639206	8	3-13-09	MKR/MKR
641691	9	10-21-10	GAE/GAE

PRODUCTION TEST AT IDLE

AMP	WATT	MOTOR SPEED	PERFORMANCE TEST			LOADED			BREAK			
			AMP	WATT	RPM	AMP	WATT	OZ/IN				
1.40	1.14	HIGH	1.27	71	156	1075	2.32	231	38	4.03	402	172
.55	.45	LOW	.50	31	72	1075	1.09	102	18	2.07	177	81

MAX LEAKAGE CURRENT 5 mA
 HI-POT TEST 2000 VOLTS
 TYPICAL PERFORMANCE SHOWN ABOVE FOR COWLE ROTATION

7186 0011 MA



LEAD DATA: 18 GA. 2/64" INS. 105° C THERMO. WHITE. BLACK AND RED LINE LEADS 8.00"/58.00" LONG WITH .567" 44" STRIPS. BROWN AND BRN/WHIT CAPACITOR LEADS 6.00"/4.00" LONG WITH 1/4" FLAG TERMINALS. 2-YELLOW AND 2-PURPLE REVERSING LEADS 8.00"/6.00" LONG WITH 1/4" PRE-INSULATED TERMINALS.

GROUND DATA: 18 GA. 2/64" INS. 105° C THERMO. GRN/YEL 7.00"/6.00" LONG WITH A #10 SERRATED RING TERMINAL.

7186 0011 P = MADE IN U.S.A.
 7186 0011R,RP = ASSEMBLED IN MEXICO

SPECIAL INSTRUCTIONS: SHAFT IS BONDZERED. PAMPHLET IS SUPPLIED.



FASCO INDUSTRIES, INC.
 MOTOR DIVISION



CONNECTION DIAGRAM
 BRN/WHIT - CAPACITOR
 WHITE - LINE
 RED-BL - LINE

MOTORS PACKED MAX. PER SKID: 252 PALLET PACK, 144 CARTON PACK.
 CUSTOMER: FASCO DISTRIBUTING CO.
 FASCO INDUSTRIES, INC.
 MOTOR DIVISION

MOTOR NUMBER REV.
 7186 0011 9

THIS MOTOR MUST BE GROUNDED IN ACCORDANCE WITH THE NATIONAL ELECTRICAL CODE TO PREVENT POSSIBLE HAZARD DUE TO ELECTRICAL SHOCK.
SAFETY WARNING

DATE/BAR CODE AREA PER 8892 6003

APPLICATION: DIST. SALES
 FINISH COLOR: GRAY
 MOTOR WEIGHT: 9.0 LBS.
 ENVIRONMENT: DRY
 INSULATION CLASS: B

LOCATE & OF NAMEPLATE ON & OF STATOR TO READ RIGHT FROM LEAD END OF MOTOR CENTER AT 65° COWLE. SIZE 3.50 X 1.00

FINISH COLOR	MOTOR WEIGHT	ENVIRONMENT	INSULATION CLASS
GRAY	9.0 LBS.	DRY	B