

PRODUCT INFORMATION PACKET

FASCO®

Model No: D150
Catalog No: D150
1/4-1/5-1/6 HP Fan & Blower Motor, 1050 RPM, 3 Speed, 115 Volts, 42 Frame, OAO
Direct Drive Motors



Regal and Fasco are trademarks of Regal Beloit Corporation or one of its affiliated companies.
©2019 Regal Beloit Corporation, All Rights Reserved. MC017097E

REGAL



Nameplate Specifications

| | | | |
|--------------------|----------------|---------------------|---------------|
| Output HP | 1/4-1/5-1/6 Hp | Output KW | 0.19 kW |
| Frequency | 60 Hz | Voltage | 115 V |
| Current | 4.1/3.2/2.5 A | Speed | 1050 rpm |
| Service Factor | 1 | Phase | 1 |
| Duty | Continuous | Insulation Class | B |
| Frame | 42 | Enclosure | Open Air Over |
| Thermal Protection | Automatic | Ambient Temperature | 40 °C |
| UL | Recognized | CSA | Y |
| CE | N | | |

Technical Specifications

| | | | |
|-----------------------|---------------------------|-------------------|-----------------|
| Electrical Type | Permanent Split Capacitor | Starting Method | Across The Line |
| Poles | 6 | Rotation | Reversible |
| Mounting | Extended Studs | Drive End Bearing | Sleeve |
| Opp Drive End Bearing | Sleeve | Frame Material | Na |
| Shaft Type | Flat | Overall Length | 10.97 in |
| Shaft Diameter | 0.500 in | Shaft Extension | 6.00 in |

This is an uncontrolled document once printed or downloaded and is subject to change without notice. Date Created:29/10/2019

NOTES

- THRU AIR SPACING BETWEEN WIRE AND METAL .094 MIN.
- THE BOLT TOLERANCE 7 - .12 IN. LBS.
- FOR WASHER SET-UP, SEE CHART 6800 0279, DETAIL "H".
- CONNECT THE TWO YELLOW REV. LEADS TOGETHER AND THE TWO PURPLE REV. LEADS TOGETHER THIS WILL GIVE COWLE ROTATION.
- LOCATE CONNECTION DIAGRAM, 6130 6312, ADJACENT TO AND RIGHT OF NAMEPLATE WITHIN .25" TO READ RIGHT FROM LEAD END OF MOTOR.
- SALES TO SPECIFY ON P.O. WHICH PACK TO USE.

| ECO | REV. | DATE | SPEC/CHK |
|--------|------|----------|----------|
| 635185 | 12 | 10-12-05 | LDC/LDC |
| 638651 | 13 | 9-22-08 | MKR/MKR |
| 639117 | 14 | 2-27-09 | LDC/LDC |
| 641578 | 15 | 9-20-10 | MKR/MKR |

- A. SEE PACKAGING MANUAL PAGE 2 FOR PACKAGING PROCEDURE
- 1 MOTOR/CARTON;
24 MOTOR/SLAYER;
6 LAYERS/PALLET;
144 MOTOR/PALLET.

- B. SEE DRAWING 8785 6079 SH. 1 FOR PALLET LAYOUT.
C. CENTER LABEL, 6119 6993, ON END OF CARTON.
D. PLACE PAMPHLET, 6122 4579, IN CARTON WITH MOTOR.

71xx xxxxC

PRODUCTION TEST AT IDLE

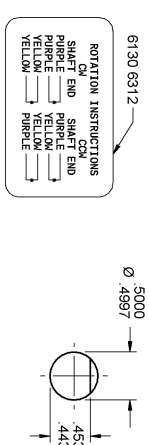
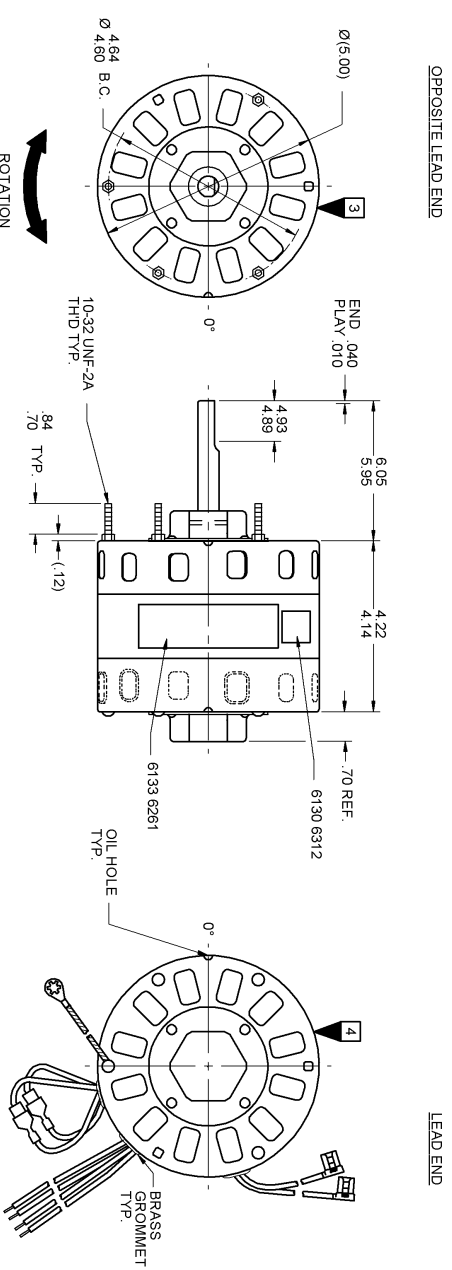
| AMP | WATT | MOTOR SPEED | PERFORMANCE TEST 115 VOLTS 60 HZ 1 PH 1/4 HP | | | LOADED | | | LOCKED | | | BREAK OZ/IN | |
|------|------|--------------|--|------|------|--------|------|------|--------|------|------|-------------|-------|
| | | | RPM | AMP | WATT | AMP | WATT | AMP | WATT | | | | |
| 2.17 | 1.90 | 110.0 — 90.5 | 1196 | 1.77 | 86 | 279.6 | 1050 | 3.99 | 393 | 63.6 | 6.96 | 659 | 295.4 |
| 1.45 | 1.26 | 84.1 — 66.3 | 1195 | 1.20 | 64 | 208.8 | 1050 | 3.06 | 292 | 45.6 | 5.38 | 479 | 219.6 |
| 1.10 | .93 | 69.1 — 52.1 | 1194 | .91 | 52 | 165.6 | 1050 | 2.40 | 226 | 33.6 | 4.36 | 367 | 177.6 |

HI-POT TEST 2000 VOLTS

MAX LEAKAGE CURRENT 5 mA

TYPICAL PERFORMANCE SHOWN FOR COWLE ROTATION

OPPOSITE LEAD END



LEAD DATA: 18 GA. 4/64" INS. 125° C EPDM WHITE, BLACK, BLUE AND RED LINE LEADS 32.00/30.00" LONG WITH .567/44" STRIPS, BROWN AND BRN/WHIT CAP. LEADS 15.00/13.00" LONG WITH 1/4" FLAG TERMS
REV LEAD DATA: 18 GA. 2/64" INS. 125° C EPDM 2 YELLOW AND 2 PURPLE 8.00/6.00" LONG WITH 1/4" PRE-INSULATED Q.C. TERMINALS
GROUND DATA: 18 GA. 2/64" INS. 105° C THERMO. GRN/YEL 7.00/6.00" LONG WITH A # 10 SERRATED RING TERMINAL.

SPECIAL INSTRUCTIONS: SHAFT IS BONDZERZED. ROTOR IS RUSTPROOFED. PAMPHLET PACKED WITH MOTOR.

7186 0009 = MADE IN U.S.A.
7186 0009R = ASSEMBLED IN MEXICO



FASCO INDUSTRIES, INC.
MOTOR DIVISION

CONNECTION DIAGRAM
BRN/WHIT - CAPACITOR
BLK-HI - LINE
RED-LO - LINE

MOTORS PACKED MAX. PER SKID: 144 CARTON PACK, TRAY PACK
CUSTOMER: FASCO DISTRIBUTING CO.
PART NUMBER: D150
APPLICATION: DIST. SALES
FINISH COLOR: GRAY
MOTOR WEIGHT: 11.2 LBS.
ENVIRONMENT: WET
INSULATION CLASS: B

ROTATION INSTRUCTIONS
PURPLE SHAFT END
BLUE HI-HEAD
YELLOW PURPLE
YELLOW PURPLE

THIS MOTOR MUST BE COMPAIED TO AIRBORNE MOTOR PARTS LIST FOR ELECTRICAL SIZES
DATE BAR CODE AREA PER 8882 6003
6133 6261 R REV. 6

LOCATE C OF NAMEPLATE ON C OF STATOR TO READ RIGHT FROM LEAD END OF MOTOR CENTER AT 0°
SIZE 3.50 X 1.00