

PRODUCT INFORMATION PACKET

FASCO®

Model No: D129

Catalog No: D129

1/125-1/200 HP Fan & Blower Motor, 1500 RPM, 2 Speed, 115 Volts, 3.3" Diameter, Semi Enclosed
Self Cooled Motors



Regal and Fasco are trademarks of Regal Beloit Corporation or one of its affiliated companies.
©2019 Regal Beloit Corporation, All Rights Reserved. MC017097E

REGAL



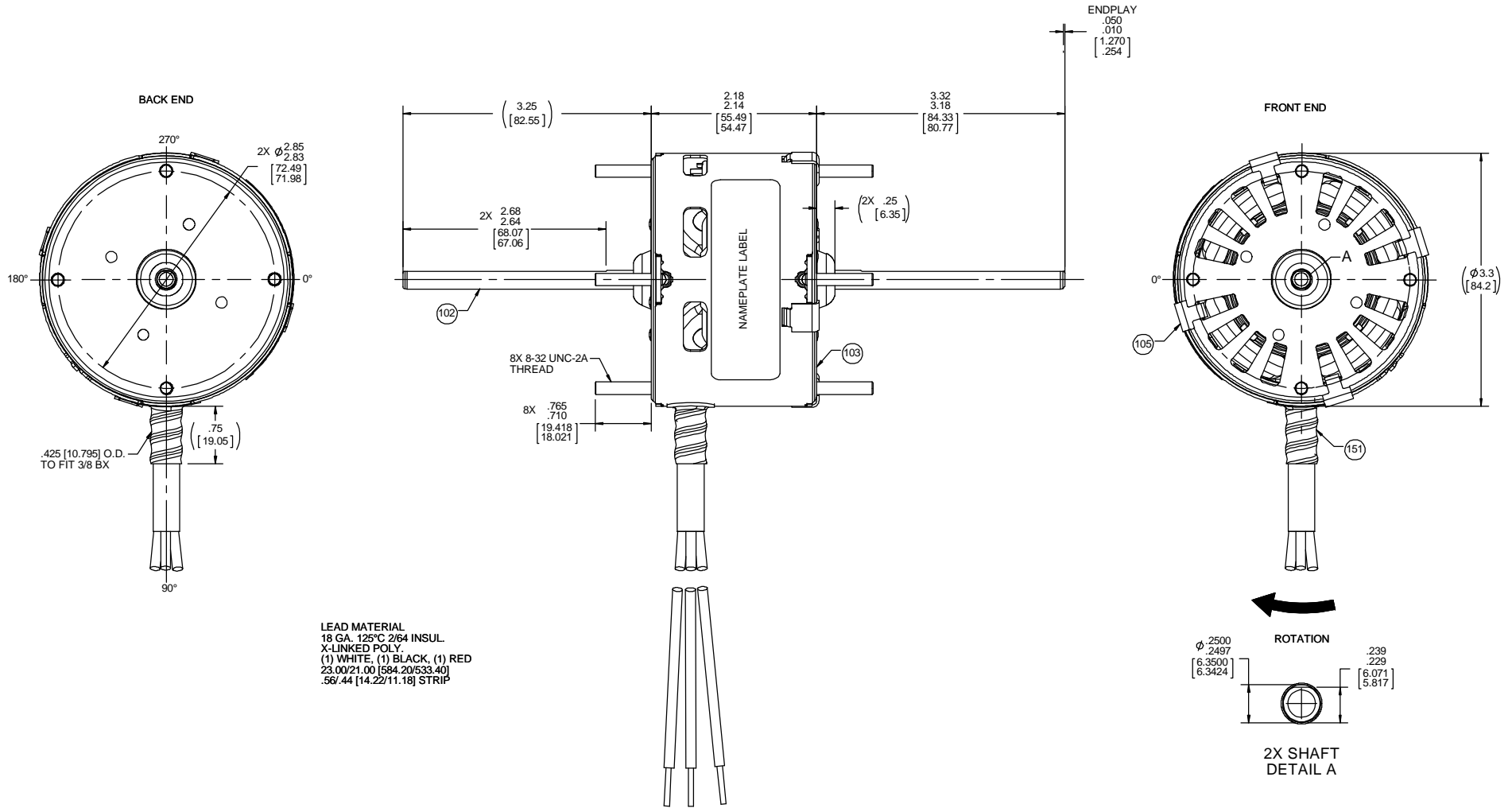
Nameplate Specifications

Output HP	1/125-1/200 Hp	Output KW	0.01 kW
Frequency	60 Hz	Voltage	115 V
Current	0.50/0.30 A	Speed	1500 rpm
Service Factor	1	Phase	1
Duty	Air Over	Insulation Class	B
Frame	3.3	Enclosure	Open Air Over
Thermal Protection	Impedence	Ambient Temperature	40 °C
UL	Recognized	CSA	Y
CE	N		

Technical Specifications

Electrical Type	Shaded Pole	Starting Method	Across The Line
Poles	4	Rotation	Clockwise Shaft End
Mounting	Extended Studs	Drive End Bearing	Sleeve
Opp Drive End Bearing	Sleeve	Frame Material	Steel
Shaft Type	Flat	Overall Length	8.75 in
Frame Length	1.95 in	Shaft Diameter	0.250 in
Shaft Extension	3.25 in		

This is an uncontrolled document once printed or downloaded and is subject to change without notice. Date Created:29/10/2019



LEAD MATERIAL
18 GA. 125°C 2/64 INSUL.
X-LINKED POLY.
(1) WHITE, (1) BLACK, (1) RED
23.00/21.00 [584.20/533.40]
.56/ .44 [14.22/11.18] STRIP

NOTES:
1. NO PACKAGING TAPE OVER CARTON LABEL

61305568

00464072

00469055

SAFETY WARNING
This motor must be grounded in accordance with local or national electrical codes to prevent possible injury due to electrical shock



AVERTISSEMENT DE SÉCURITÉ
Ce moteur doit être fondée sur conformément à la réglementation locale ou nationale électrique codes pour prévenir d'éventuelles blessures en raison de choc électrique

LOCATE IN A CONVENIENT LOCATION TO READ RIGHT FROM THE FRONT END

FASCO Fasco Industries, Inc. Motor Division

Assembled in Mexico
No. 71633265 TYPE 63210B1 Z.P. AO (2spd)
115 V 60 Hz Class B LR6319
0.5/0.3 A 1500 RPM 1/125-1/200 HP
Model D129 Max Amb: 40°C
Rotation: CCWLE

Connection Diagram
Wht Common
Blk High
Red Low

61299553

CUSTOMER:	FASCO DIST.	APPLICATION:										
CUSTOMER PN:	D129	MOTOR WEIGHT:	2.14 LBS.									
		ENVIRONMENT:	DRY									
HORIZONTAL	UP	MOTOR TYPE					REFERENCE SAMPLE					
		B	LA	FR	A	S	C	E	B	A		
	DOWN	00	63	30	V	01	BS	0	1	0		
TYPICAL PERFORMANCE AT 115 VOLTS 60 HZ												
		IDLE			LOADED			LOCKED			BREAK	
MOTOR SPEED	RPM	AMP	WATT	IN OZ	RPM	AMP	WATT	IN OZ	AMP	WATT	IN OZ	
HIGH	1710	.36	24	4.9	1550	.38	29	3.0	.52	44	6.8	
LOW	1710	.23	15	2.5	1550	.24	17	2.2	.34	27	4.7	

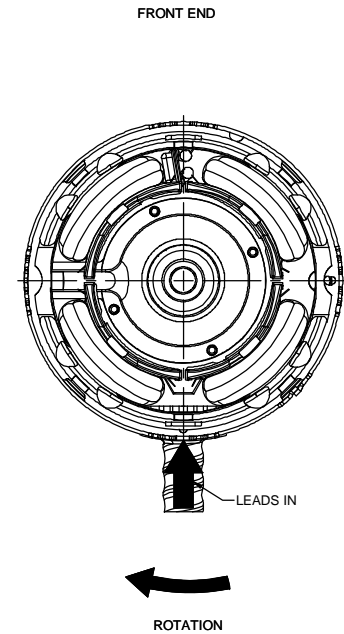
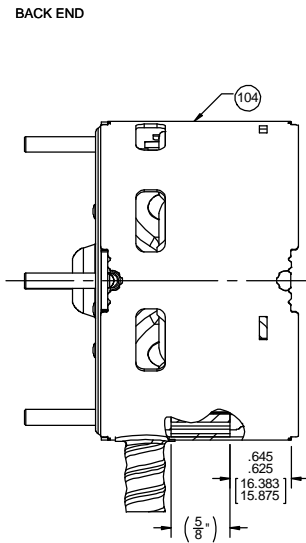
DRAWING REVISION	REVISION BY	DATE	TOLERANCES UNLESS OTHERWISE SPECIFIED:
AA	MLS	7/20/2017	DEC. INCH mm ANGLE
ECO-0127109	APPROVED BY	DATE	.X ±0.1 [2.5] 1°
	KSA	7/20/2017	.XX ±0.01 [0.25]
ECO DESCRIPTION			
UPDATED WARNING LABEL			
COPYRIGHT REGAL BELTO AMERICA, INC. ALL RIGHTS RESERVED.			
PROPRIETARY AND CONFIDENTIAL INFORMATION. THIS DOCUMENT IS THE PROPERTY OF REGAL BELTO AMERICA, INC. FORMERLY AND CONTAINS OWNERS PROPRIETARY INFORMATION. ANY PERSON, CORPORATION OR OTHER FIRM RECEIVING IT IS DEEMED TO HAVE AGREED TO AGREE THAT IT, AND/OR ANY PART OF IT, SHALL NOT BE DISCLOSED TO ANY PERSON, CORPORATION OR OTHER ENTITY, DUPLICATED, AND/OR USED, EXCEPT AS EXPRESSLY APPROVED IN WRITING IN ADVANCE BY OWNER. THIS DOCUMENT SHALL BE RETURNED TO OWNER UPON REQUEST. IT MAY BE SUBJECT TO CERTAIN RESTRICTIONS UNDER APPLICABLE EXPORT CONTROL LAWS AND REGULATIONS.			

DRAWN BY	DATE	APPROVED BY	DATE
MLS	7/20/2017	KSA	7/20/2017
DESCRIPTION	OUTLINE MOTOR ASSY		
REFERENCE	MATERIAL	PROCESS/FINISH	SHEET
		BLACK	1 OF 2

THIRD ANGLE PROJECTION	SIZE	DRAWING NUMBER	SHEET
C	C	71633265	1 OF 2

NOTES:

1. STAKE STATOR TO MAIN FRAME PER 88830264.
2. MAXIMUM TORQUE REQUIRED TO TURN MOTOR SHAFT IS 3/8 IN. OZ.
3. MAKE UP WASHERS ARE TO BE ADDED OR DELETED TO ACHIEVE REQUIRED ENDPLAY.
4. ASSEMBLE TUBING INSIDE BX CONNECTOR.



PACKING SPECIFICATIONS

1. PACK 1 PER CONTAINER, 24 CONTAINERS PER LAYER, 7 LAYERS PER PALLET, 168 MAX. PER PALLET, PACKING ASSY. 88834200.
2. PLACE (1) FILLER TUBE OVER EACH SHAFT EXTENSION, PACK MOTOR IN CARTON LEADS DOWN, STUFF PAPER AROUND MOTOR TO PREVENT MOVEMENT DURING SHIPMENT. CLOSE FLAPS AND TAPE, APPLY CARTON LABEL TO EACH CARTON.
3. PLACE (1) FLAT PAD ON PALLET AND (1) BETWEEN EACH LAYER AND (1) ON TOP LAYER. PLACE (1) FLAT PAD ON TOP OF LAYER OF PALLET PACK BEFORE STRETCH WRAPPING. PLACE ALL INSPECTION STICKERS AND WRITING ON FLAT PAD TO PREVENT MARKING ON CARTONS.
4. CARTON LABELS MUST ALL FACE ONE DIRECTION TOWARD THE OPEN END OF THE PALLET. SEE 88834408.

DRAWING REVISION AA		REVISION BY MLS	DATE 7/20/2017	TOLERANCES UNLESS OTHERWISE SPECIFIED:		DRAWN BY MLS		Regal Beloit America, Inc.
ECO ECO-0127109		APPROVED BY KSA	DATE 7/20/2017	DEC.	INCH	mm	ANGLE	
ECO DESCRIPTION				.X	±0.1	[±2.5]	±1°	DESCRIPTION OUTLINE MOTOR ASSY
UPDATED WARNING LABEL <small>COPYRIGHT REGAL BELOIT AMERICA, INC. ALL RIGHTS RESERVED. PROPRIETARY AND CONFIDENTIAL INFORMATION. THIS DOCUMENT IS THE PROPERTY OF REGAL BELOIT AMERICA, INC. FORMERLY AND CONTAINS OWNERS PROPRIETARY INFORMATION. ANY PERSON, CORPORATION OR OTHER FIRM RECEIVING IT IS DEEMED BY RECEIVING IT, TO AGREE THAT IT, AND/OR ANY PART OF IT, SHALL NOT BE DISCLOSED TO ANY PERSON, CORPORATION OR OTHER ENTITY, DUPLICATED, AND/OR USED, EXCEPT AS EXPRESSLY APPROVED IN WRITING IN ADVANCE BY OWNER. THIS DOCUMENT SHALL BE RETURNED TO OWNER UPON REQUEST. IT MAY BE SUBJECT TO CERTAIN RESTRICTIONS UNDER APPLICABLE EXPORT CONTROL LAWS AND REGULATIONS.</small>				.XX	±0.01	[±0.25]		
				.XXX	±0.005	[±0.127]		DATE 7/20/2017
				.XXXX	±0.0005	[±0.0127]		APPROVED BY KSA
				MACHINED SURFACES: .125/ 3.2 INCH/ mm SHOWN IN (BRACKETS) m/ty				DATE 7/20/2017
				REMOVE BURRS & BREAK SHARP EDGES: .003/ .015 [0.076/ .381] X 45° CORNER FILLETS: R.02 [.51]				REFERENCE
				THIRD ANGLE PROJECTION				MATERIAL
				SIZE C				PROCESS/FINISH BLACK
				DRAWING NUMBER 71633265				SHEET 2 OF 2