

PRODUCT INFORMATION PACKET

FASCO®

Model No: D1184
Catalog No: D1184
1/16 HP Draft Inducer Motor, 3450 RPM, 460 Volts, 3.3" Diameter, Semi Enclosed
Draft Inducer Motors



Regal and Fasco are trademarks of Regal Beloit Corporation or one of its affiliated companies.
©2019 Regal Beloit Corporation, All Rights Reserved. MC017097E

REGAL



Nameplate Specifications

Output HP	1/16 Hp	Output KW	0.04 kW
Frequency	60 Hz	Voltage	460 V
Current	.3 A	Speed	3450 rpm
Service Factor	1	Phase	1
Duty	Air Over	Insulation Class	B
Frame	3.3	Enclosure	Open Air Over
Thermal Protection	Thermally Protected	Ambient Temperature	40 °C
UL	Recognized	CSA	Y
CE	N		

Technical Specifications

Electrical Type	Permanent Split Capacitor	Starting Method	Across The Line
Poles	2	Rotation	Counterclockwise Shaft End
Mounting	Extended Studs	Drive End Bearing	Ball
Opp Drive End Bearing	Ball	Frame Material	Steel
Shaft Type	Double Flat	Overall Length	8.10 in
Frame Length	4.51 in	Shaft Diameter	0.312 in
Shaft Extension	3.35 in		

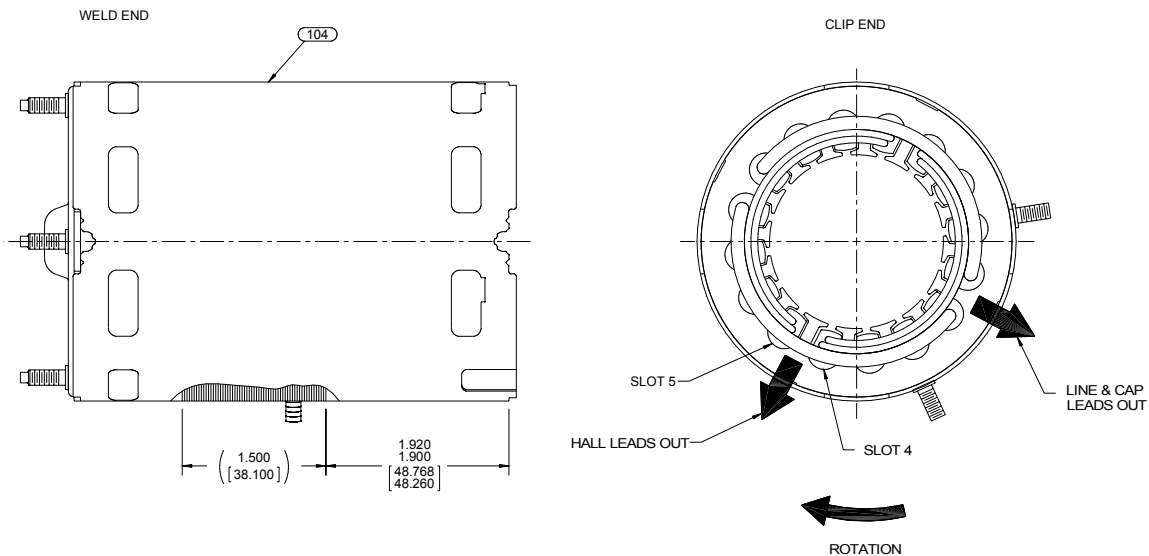
This is an uncontrolled document once printed or downloaded and is subject to change without notice. Date Created:29/10/2019

4

3

2

1



NOTES:

1. STAKE STATOR TO SLEEVE PER P.S. 8883 0264.
2. MAXIMUM TORQUE REQUIRED TO TURN MOTOR SHAFT IS 3/8 INCH-OUNCE.
3. ASSEMBLE SPRING BETWEEN WASHER AND BEARING ON WELD END, WITH SPRING FINGERS TOWARDS BEARING.
4. ASSEMBLE BALL BEARINGS TO BEARING RETAINERS PER WORK CENTER PROCESS.
5. ADD A LINE OF LOCTITE 410 APPROXIMATELY .050[1.270] WIDE AROUND THE O.D. OF THE BEARING RETAINER A MAXIMUM OF .050[1.270] FROM THE END OPPOSITE THE BEARING RETAINER FLANGE FACE. TACHOMETER RING WILL WIPE ADHESIVE DOWN ON RETAINER AS IT IS INSTALLED. PUSH THE TACHOMETER RING INTO THE NOTCH ON THE BEARING RETAINER. WITH THE BEARING RETAINER UP, LET THE LOCTITE SET UP FOR 6 TO 8 HOURS MINIMUM. AFTER ALLOWING THE LOCTITE TO SET UP, THE TACHOMETER RING MUST WITHSTAND 20 LBS. MINIMUM RADIAL LOAD TEST AFTER ASSEMBLED TO BEARING RETAINER. REJECT ANY THAT DO NOT HOLD.
6. CUT BROWN LEADS TO LENGTH, STRIP TO .22 ± .06[5.59±1.52] AND ASSEMBLE TERMINALS.
7. LINE LEADS ARE TO BE HANKED.
8. ATTACHED TERMINALS MUST MEET SPECIFICATIONS ON P.S. 8883 4229.

PACKING SPECIFICATIONS

1. PACK PER P.S. 8883 4200. 1 PER CARTON, 18 PER LAYER, 108 MAX PER PALLET, 6 LAYERS PER PALLET.
2. PLACE FILLER TUBE OVER SHAFT EXTENSION, FOAM RING ON CLIP END, PLACE MOTOR IN CARTON, CLOSE FLAPS AND TAPE. PLACE CARTON LABEL ON SHAFT END OF CARTON.
3. CARTON LABELS MUST ALL FACE ONE DIRECTION TOWARD THE OPEN END OF THE PALLET. SEE P.S. 8883 4408.
4. PLACE (1) FLAT PAD ON PALLET, (1) BETWEEN EACH LAYER AND (1) ON TOP.
5. PLACE ALL INSPECTION STICKERS AND WRITING ON TOP FLAT PAD.

DRAWING REVISION R	REVISION BY G.ZHAO	DATE 07-27-2015	TOLERANCES UNLESS OTHERWISE SPECIFIED: DEC. INCH mm ANGLE	DRAWN BY TANNT.HIBES
ECO ECO-0081097	APPROVED BY C.ZHANG	DATE 07-27-2015	.XX ±0.01 [±0.25] .XXX ±0.005 [±0.127] .XXXX ±0.0005 [±0.0127]	DATE 01-21-2003
SEE ECO			REMOVE BURRS & BREAK SHARP EDGES: .0031 [0.076381] X 45° CORNER FILLETS: R.02 [51]	APPROVED BY
COPYRIGHT REGAL BELOIT AMERICA, INC. ALL RIGHTS RESERVED. PROPRIETARY AND CONFIDENTIAL INFORMATION. THIS DOCUMENT IS THE PROPERTY OF REGAL BELOIT AMERICA, INC. FORMERLY AND CONTAINS OWNERS PROPRIETARY INFORMATION. ANY PERSON, CORPORATION OR OTHER FIRM RECEIVING IT IS DEEMED, BY RECEIVING IT, TO AGREE THAT IT, AND/OR ANY PART OF IT, SHALL NOT BE DISCLOSED TO ANY PERSON, CORPORATION OR OTHER ENTITY, DUPLICATED, AND/OR USED, EXCEPT AS EXPRESSLY APPROVED IN WRITING IN ADVANCE BY OWNER. THIS DOCUMENT SHALL BE RETURNED TO OWNER UPON REQUEST. IT MAY BE SUBJECT TO CERTAIN RESTRICTIONS UNDER APPLICABLE EXPORT CONTROL LAWS AND REGULATIONS.			MACHINED SURFACES: .125 / 3.2 INCH V mm V mm SHOWN IN [BRACKETS]	DATE
				DESCRIPTION MODEL-SFHP-3.3 OUTLINE
				MATERIAL PROCESS/FINISH BLACK
				REFERENCE
				THIRD ANGLE PROJECTION
				SIZE DRAWING NUMBER 71624419
				SHEET 2 OF 2

4

3

2

1