

# PRODUCT INFORMATION PACKET

FASCO®

Model No: D1167

Catalog No: D1167

1/40 HP OEM Replacement Motor, 3000 RPM, 208-230 Volts, 3.3" Diameter, Semi Enclosed  
HVAC/R OEM Replacement Motors



Regal and Fasco are trademarks of Regal Beloit Corporation or one of its affiliated companies.  
©2019 Regal Beloit Corporation, All Rights Reserved. MC017097E

REGAL



**Nameplate Specifications**

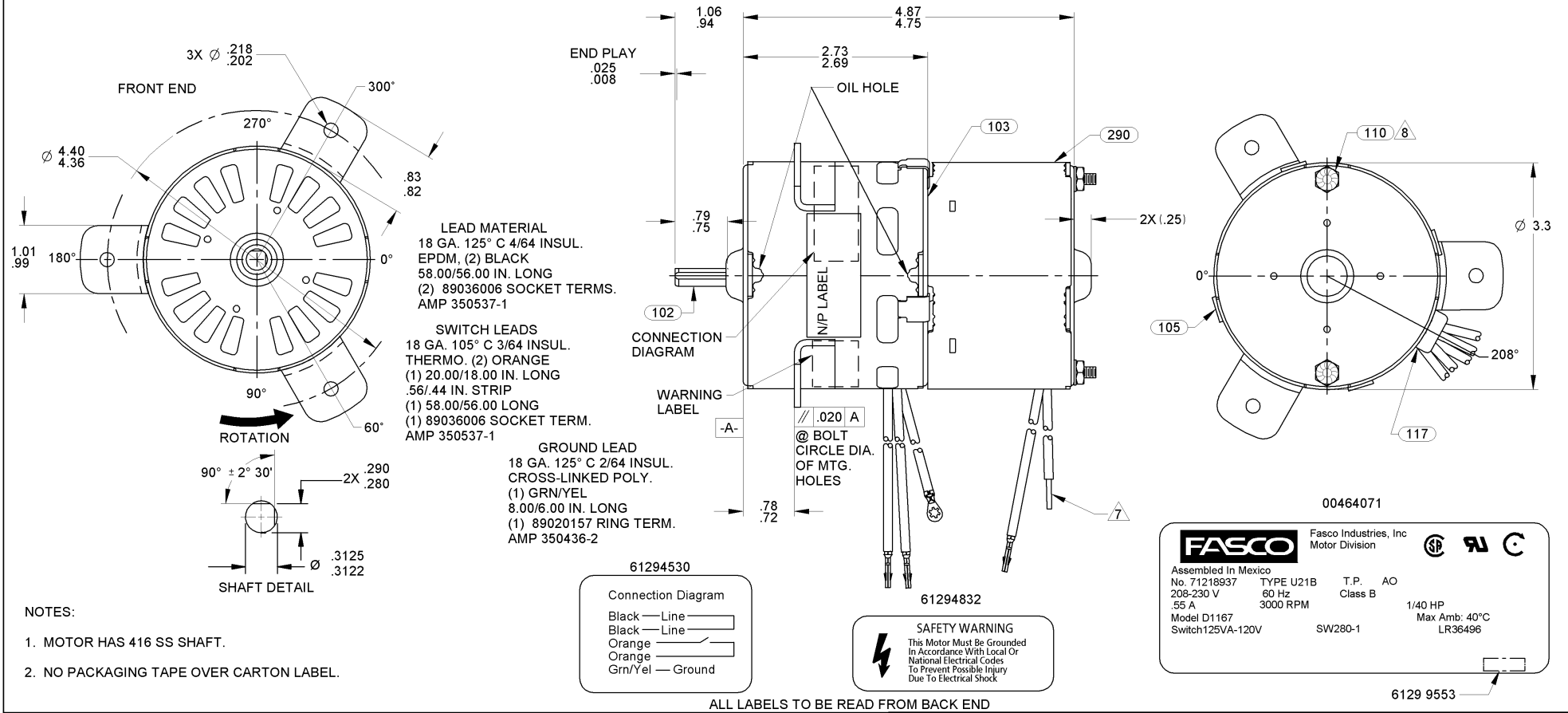
Output HP	<b>1/40 Hp</b>	Output KW	<b>0.02 kW</b>
Frequency	<b>60 Hz</b>	Voltage	<b>208-230 V</b>
Current	<b>.55 A</b>	Speed	<b>3000 rpm</b>
Service Factor	<b>1</b>	Phase	<b>1</b>
Duty	<b>Air Over</b>	Insulation Class	<b>B</b>
Frame	<b>3.3</b>	Enclosure	<b>Open Air Over</b>
Thermal Protection	<b>Thermally Protected</b>	Ambient Temperature	<b>40 °C</b>
UL	<b>Recognized</b>	CSA	<b>Y</b>
CE	<b>N</b>		

**Technical Specifications**

Electrical Type	<b>Shaded Pole</b>	Starting Method	<b>Across The Line</b>
Poles	<b>2</b>	Rotation	<b>Counterclockwise Shaft End</b>
Mounting	<b>Lug</b>	Drive End Bearing	<b>Sleeve</b>
Opp Drive End Bearing	<b>Sleeve</b>	Frame Material	<b>Steel</b>
Shaft Type	<b>Double Flat</b>	Overall Length	<b>6.18 in</b>
Frame Length	<b>2.50 in</b>	Shaft Diameter	<b>0.313 in</b>
Shaft Extension	<b>1 in</b>		

This is an uncontrolled document once printed or downloaded and is subject to change without notice. Date Created:29/10/2019

09	REMOVED BARCODE FOR N/P.	JMM 11-09-09	10	ADDED CARTON LABEL NOTES	4002209 MLM 6/1/11	11	UPDATE CONN. DIAGRAM LABEL TO MATCH LABEL PRINT	4009178 MLM 5/10/13	STANDARD TOLERANCES: ANGULAR +/- 1 DEGREE 2 PLACE DECIMAL +/- .01 3 PLACE DECIMAL +/- .005
----	--------------------------	--------------	----	--------------------------	-----------------------	----	---	------------------------	---



- NOTES:
1. MOTOR HAS 416 SS SHAFT.
  2. NO PACKAGING TAPE OVER CARTON LABEL.

FRONT SHAFT POSITION		TYPICAL PERFORMANCE AT 230 VOLTS 60 Hz										CUSTOMER:		FASCO DIST											
HORIZONTAL	UP DOWN	MOTOR SPEED	IDLE			LOADED			LOCKED		BREAK	PART NUMBER:	FASCO DIST												
			R.P.M.	AMP.	WATT	IN.OZ.	R.P.M.	AMP.	WATT	IN.OZ.			AMP.	WATT	D1167	FASCO MOTORS GROUP AC MOTOR/BLOWER DIVISION									
			3400	.51	75	9.5	3000	.61	100	3.8	.82	130	10.6	APPLICATION:	BLOWER	CONFIDENTIAL: DO NOT DUPLICATE OR DISCLOSE TO THIRD PARTIES WITHOUT WRITTEN PERMISSION OF FASCO MOTORS GROUP, AC MOTOR/BLOWER DIVISION.									
														MOTOR WEIGHT:	3.0 LBS.	MOTOR TYPE									
														ENVIRONMENT:	DRY	DRAWING NUMBER									
														FINISH COLOR:	FLAT BLACK	SHADED POLE									
														DRAWN BY:	B. POPPLEWELL	7121 8937									
														DATE DRAWN:	09/12/2005	B	LA	FR	A	S	C	E	B	A	REV.
																00	21	34	V	02	GP	5	3	0	11