
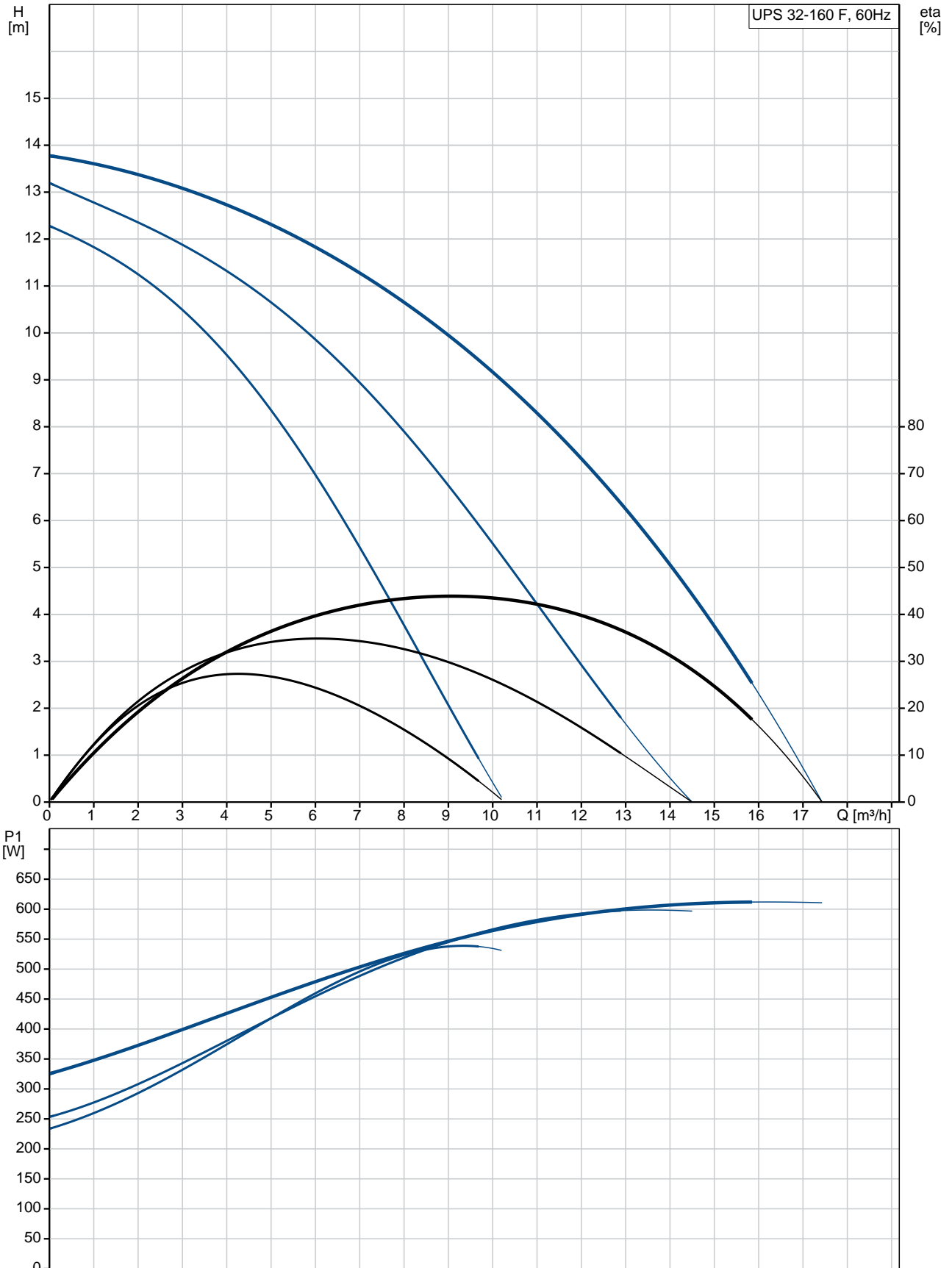


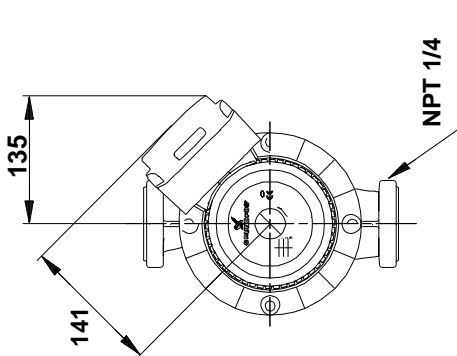
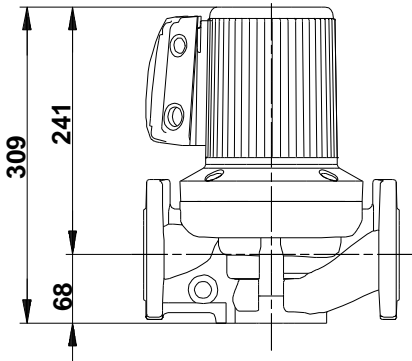
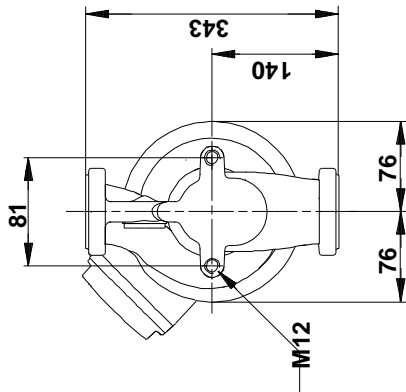
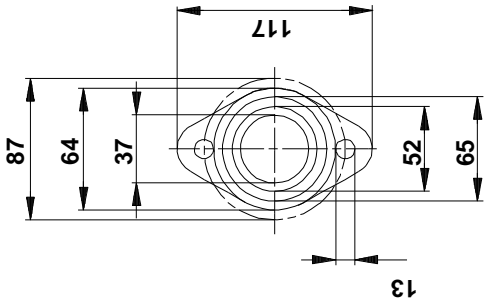
Position	Qty.	Description
	1	<p><b>UPS 32-160 F</b></p>  <p style="text-align: center;"><b>Note! Product picture may differ from actual product</b></p> <p>Product No.: On request            The pump is of the canned rotor type, i.e. pump and motor form an integral unit without shaft seal and with only two gaskets for sealing.            The bearings are lubricated by the pumped liquid.</p> <p>In order to avoid problems in connection with disposal, great importance has been attached to using as few different materials as possible.</p> <p>The pump is characterized by:</p> <ul style="list-style-type: none"> <li>* 3 speed motor.</li> <li>* Ceramic radial bearings.</li> <li>* Carbon axial bearing.</li> <li>* Stainless steel rotor can, bearing plate and rotor cladding.</li> <li>* Aluminium alloy stator housing.</li> <li>* Cast iron pump housing.</li> <li>* Stator with built-in thermal switch.</li> </ul> <p>The motor is a 1-phase motor.</p> <p>The pump is supplied with a standard module in the terminal box.            The standard module is to be connected to the mains supply via external contactor.</p> <p><b>Controls:</b>            Relay: with relay</p> <p><b>Liquid:</b>            Pumped liquid: Water            Liquid temperature range: -10 .. 120 °C            Liquid temperature during operation: 60 °C            Density: 983.2 kg/m<sup>3</sup></p> <p><b>Technical:</b>            Approvals on nameplate: CUL</p> <p><b>Materials:</b>            Pump housing: Cast iron                              EN-JL1040                              ASTM 35 B - 40 B            Impeller: Stainless steel                              DIN W.-Nr. 1.4301                              AISI 304</p>

Position	Qty.	Description
		<p><b>Installation:</b></p> <p>Range of ambient temperature: 0 .. 40 °C            Maximum operating pressure: 10 bar            Flange standard: USA Oval            Type of connection: F            Pipe connection: GF 40/43            Pressure rating: 145 psi            Port-to-port length: 342 mm</p> <p><b>Electrical data:</b></p> <p>Power input in speed 1: 555 W            Power input in speed 2: 600 W            Max. power input: 625 W            Mains frequency: 60 Hz            Rated voltage: 1 x 115 V            Current in speed 1: 5.5 A            Current in speed 2: 5.8 A            Current in speed 3: 5.8 A            Cos phi in speed 1: 0.88            Cos phi in speed 2: 0.9            Cos phi: 0.94            Capacitor size - run: 60 µF/250 V            Enclosure class (IEC 34-5): X4D            Insulation class (IEC 85): H</p> <p><b>Others:</b></p> <p>Net weight: 17.1 kg            Gross weight: 20.5 kg            Shipping volume: 0.059 m³</p>

## On request UPS 32-160 F 60 Hz

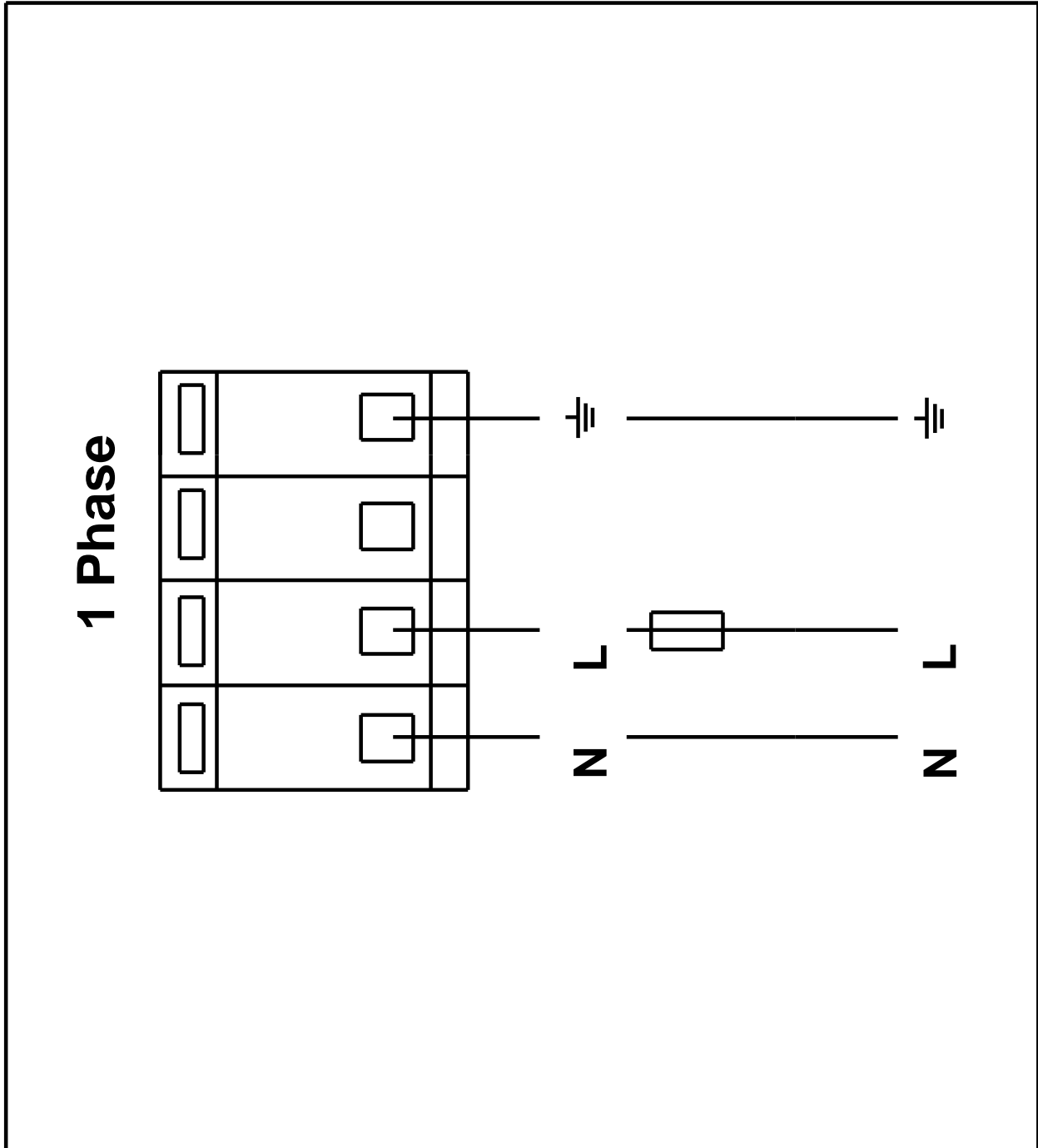


## On request UPS 32-160 F 60 Hz



Note! All units are in [mm] unless others are stated.  
Disclaimer: This simplified dimensional drawing does not show all details.

**On request UPS 32-160 F 60 Hz**



Note! All units are in [mm] unless others are stated.



Company name:

Created by:

Phone:

Date:

17/09/2018

---

**Order Data:**

Product name: UPS 32-160 F

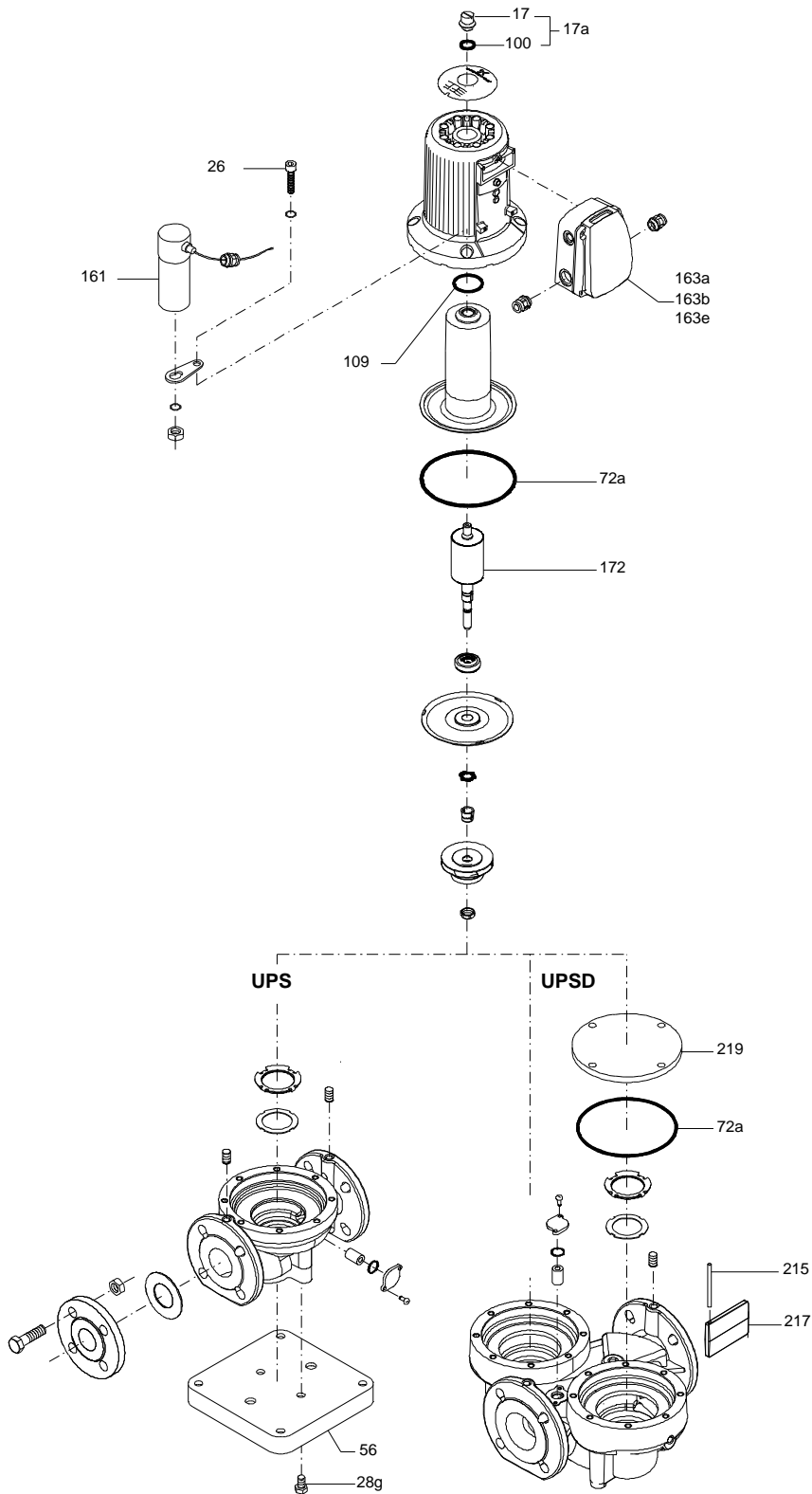
Amount: 1

Product No: On request

Total: Price on request

---

## Exploded view (TM010410 3905)





Company name:

Created by:

Phone:

Date:

17/09/2018

**Parts list UPS 32-160 F, Product No. On request**  
**Valid from 1.4.1995 (9513)**

Pos	Description	Annotation	Classification Data	Part no.	Qty.	Unit
	Capacitor cpl.				1	pcs
163a	Terminal box cpl.		Designation: WITH RELAY MODULE		1	pcs
163b	Terminal box cpl.		Designation: WITH STANDARD MODULE		1	pcs
163e	Terminal box cpl.		Designation: W. PROTECTION MODULE		1	pcs