
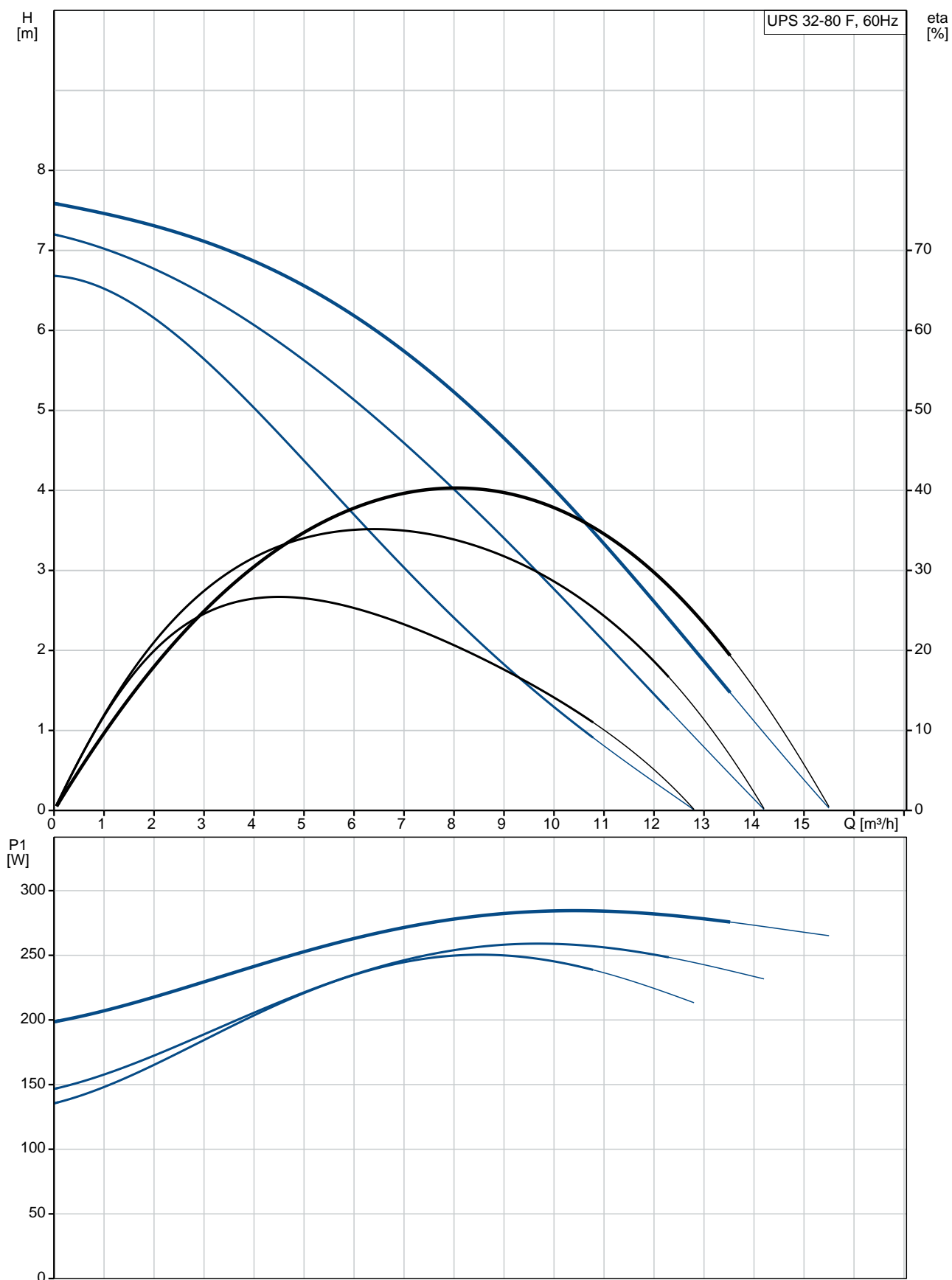


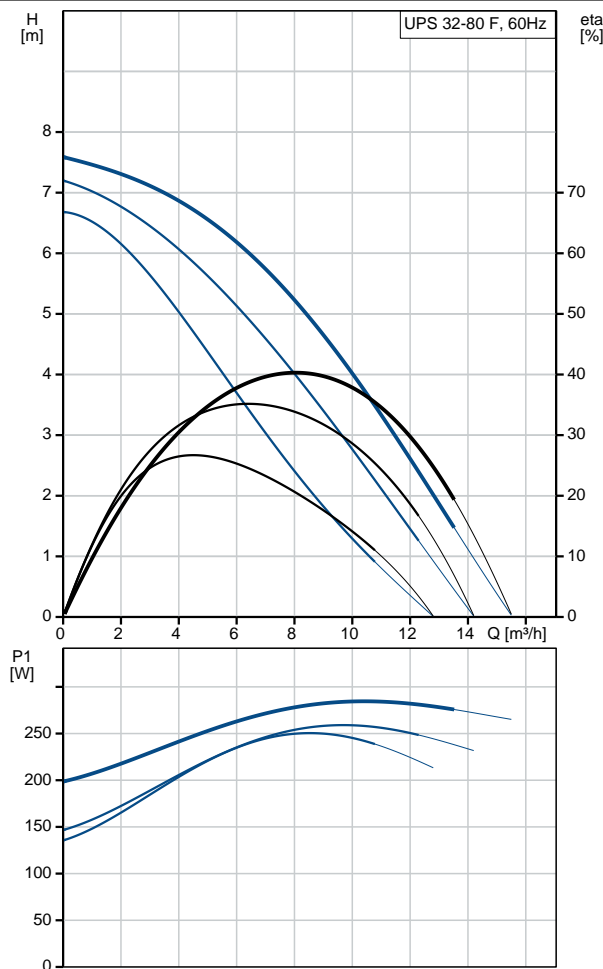
Position	Qty.	Description
	1	<p>UPS 32-80 F</p>  <p>Note! Product picture may differ from actual product</p> <p>Product No.: On request</p> <p>The pump is of the canned rotor type, i.e. pump and motor form an integral unit without shaft seal and with only two gaskets for sealing. The bearings are lubricated by the pumped liquid.</p> <p>In order to avoid problems in connection with disposal, great importance has been attached to using as few different materials as possible.</p> <p>The pump is characterized by:</p> <ul style="list-style-type: none"> * 3 speed motor. * Ceramic radial bearings. * Carbon axial bearing. * Stainless steel rotor can, bearing plate and rotor cladding. * Aluminium alloy stator housing. * Cast iron pump housing. * Stator with built-in thermal switch. <p>The motor is a 1-phase motor.</p> <p>The pump is supplied with a standard module in the terminal box. The standard module is to be connected to the mains supply via external contactor.</p> <p>Controls:</p> <p>Relay: with relay</p> <p>Liquid:</p> <p>Pumped liquid: Water</p> <p>Liquid temperature range: -10 .. 120 °C</p> <p>Liquid temperature during operation: 60 °C</p> <p>Density: 983.2 kg/m³</p> <p>Technical:</p> <p>Approvals on nameplate: CUL</p> <p>Materials:</p> <p>Pump housing: Cast iron EN-JL1040 ASTM 35 B - 40 B</p> <p>Impeller: Stainless steel DIN W.-Nr. 1.4301 AISI 304</p>

Position	Qty.	Description
		Installation: Range of ambient temperature: 0 .. 40 °C Maximum operating pressure: 10 bar Flange standard: USA Oval Type of connection: F Pipe connection: GF 15/26 Pressure rating: 145 psi Port-to-port length: 279 mm Electrical data: Power input in speed 1: 250 W Power input in speed 2: 260 W Max. power input: 280 W Mains frequency: 60 Hz Rated voltage: 1 x 115 V Current in speed 1: 2.5 A Current in speed 2: 2.5 A Current in speed 3: 2.66 A Cos phi in speed 1: 0.87 Cos phi in speed 2: 0.9 Cos phi: 0.92 Capacitor size - run: 30 µF/400 V Enclosure class (IEC 34-5): X4D Insulation class (IEC 85): F Others: Net weight: 16.3 kg Gross weight: 19.7 kg Shipping volume: 0.059 m³

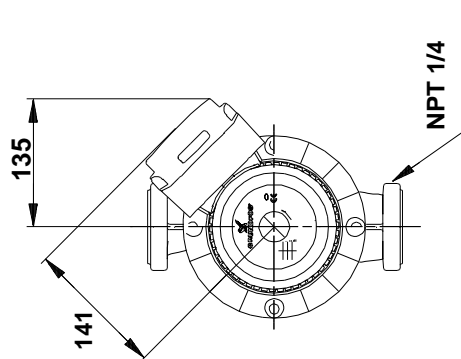
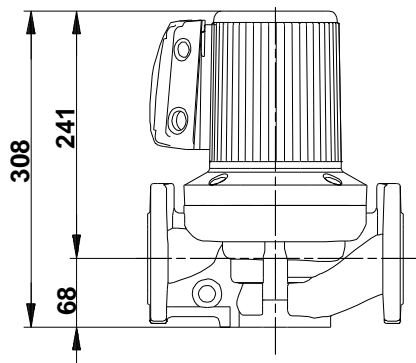
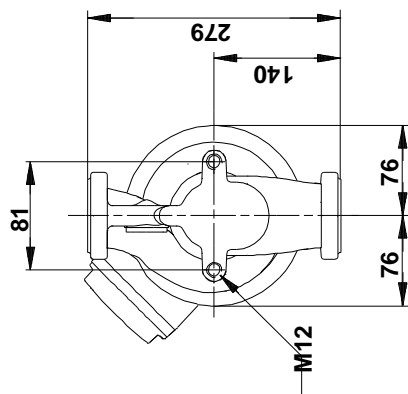
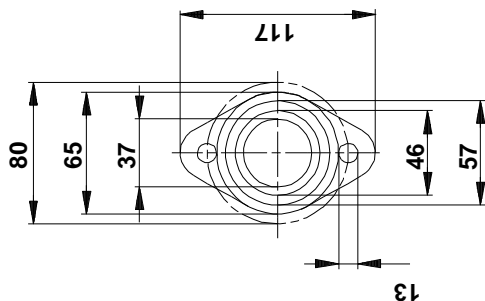
On request UPS 32-80 F 60 Hz



Description	Value
General information:	
Product name:	UPS 32-80 F
Product No:	On request
EAN number:	On request
Technical:	
Speed no:	3
Head max:	80 dm
Approvals on nameplate:	CUL
Model:	C
Materials:	
Pump housing:	Cast iron
	EN-JL1040
	ASTM 35 B - 40 B
Impeller:	Stainless steel
	DIN W.-Nr. 1.4301
	AISI 304
Installation:	
Range of ambient temperature:	0 .. 40 °C
Maximum operating pressure:	10 bar
Flange standard:	USA Oval
Type of connection:	F
Pipe connection:	GF 15/26
Pressure rating:	145 psi
Port-to-port length:	279 mm
Liquid:	
Pumped liquid:	Water
Liquid temperature range:	-10 .. 120 °C
Liquid temperature during operation:	60 °C
Density:	983.2 kg/m ³
Electrical data:	
Power input in speed 1:	250 W
Power input in speed 2:	260 W
Max. power input:	280 W
Mains frequency:	60 Hz
Rated voltage:	1 x 115 V
Current in speed 1:	2.5 A
Current in speed 2:	2.5 A
Current in speed 3:	2.66 A
Cos phi in speed 1:	0.87
Cos phi in speed 2:	0.9
Cos phi:	0.92
Capacitor size - run:	30 µF/400 V
Enclosure class (IEC 34-5):	X4D
Insulation class (IEC 85):	F
Motor protec:	CONTACT
Thermal protec:	internal
R a:	9.55 - 12.6 ohm
R s1:	3.05 - 4.0 ohm
R s2:	6.7 - 8.8 ohm
Controls:	
Relay:	with relay
Pos term box:	1.30H
Others:	
Net weight:	16.3 kg
Gross weight:	19.7 kg
Shipping volume:	0.059 m ³
Sales region:	Namreg



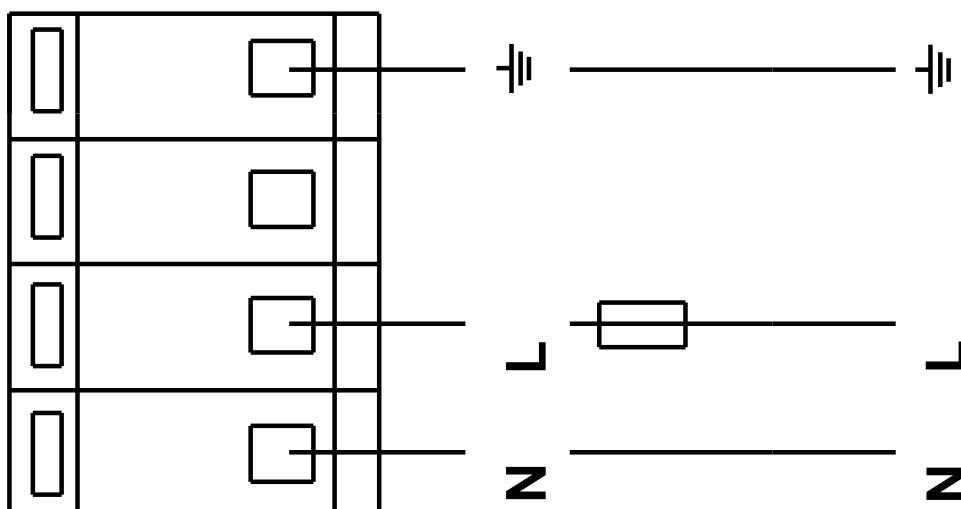
On request UPS 32-80 F 60 Hz



Note! All units are in [mm] unless others are stated.
Disclaimer: This simplified dimensional drawing does not show all details.

On request UPS 32-80 F 60 Hz

1 Phase



Note! All units are in [mm] unless others are stated.



Company name:

Created by:

Phone:

Date:

17/09/2018

Order Data:

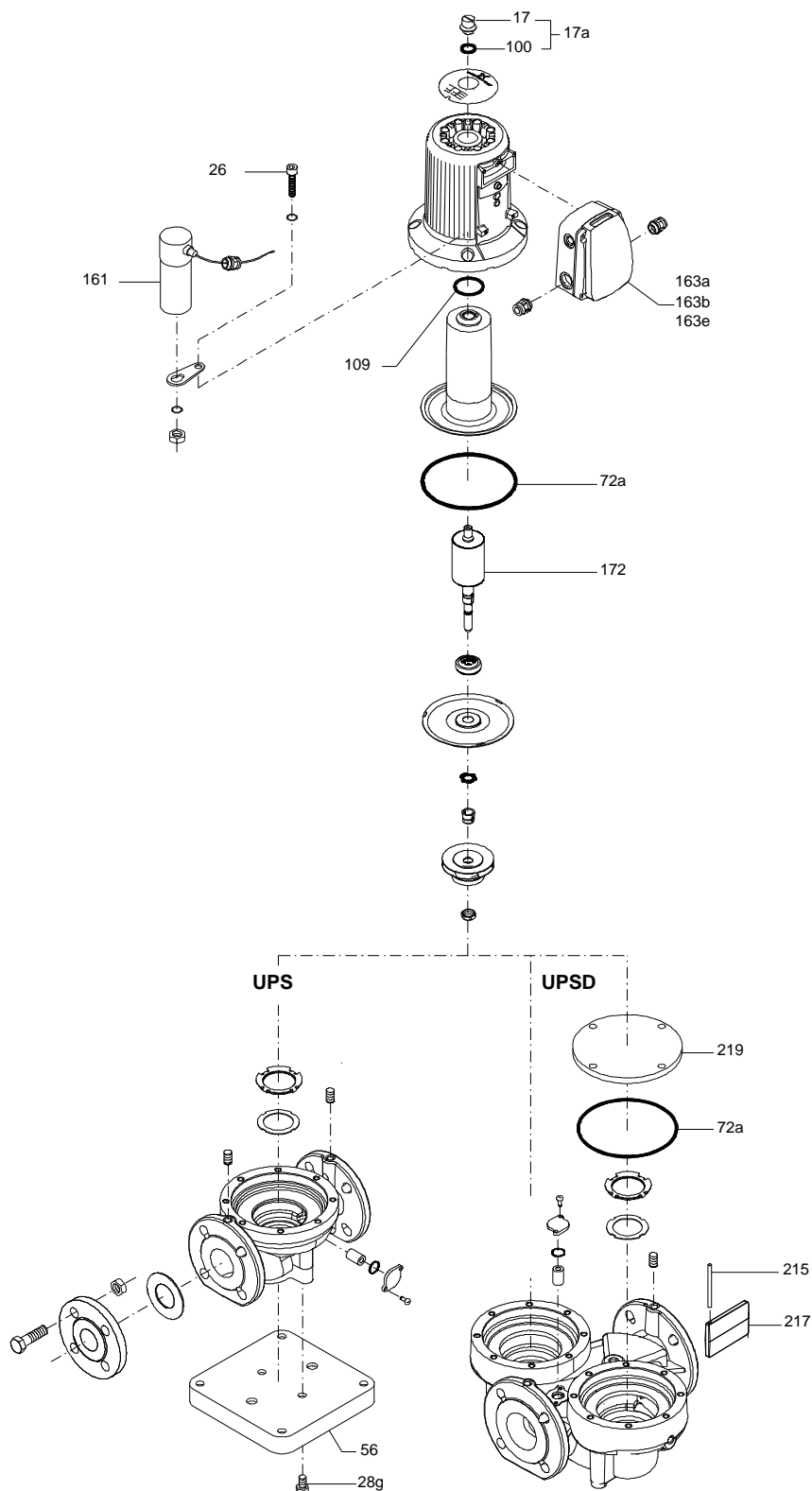
Product name: UPS 32-80 F

Amount: 1

Product No: On request

Total: Price on request

Exploded view (TM010410 3905)





Company name:

Created by:

Phone:

Date:

17/09/2018

Parts list UPS 32-80 F, Product No. On request
Valid from 1.4.1995 (9513)

Pos	Description	Annotation	Classification Data	Part no.	Qty.	Unit
	Capacitor				1	pcs
163a	Terminal box cpl.		Designation: WITH RELAY MODULE		1	pcs
163b	Terminal box cpl.		Designation: WITH STANDARD MODULE		1	pcs
163e	Terminal box cpl.		Designation: W. PROTECTION MODULE		1	pcs